

## Product datasheet

### anti-p21/ WAF1 mouse monoclonal, WA-1, purified

#### Short overview

<b>Cat. No.</b>	691725
<b>Quantity</b>	1 ml (100 µg/ml)
<b>Concentration</b>	100 µg/ml

#### Product description

<b>Host</b>	Mouse
<b>Antibody Type</b>	Monoclonal
<b>Isotype</b>	IgG1 kappa
<b>Clone</b>	WA-1
<b>Immunogen</b>	Human p21 protein
<b>Formulation</b>	PBS with 0.02% sodium azide
<b>Synonym</b>	Cyclin-dependent kinase inhibitor 1, CDK-interacting protein 1, Melanoma differentiation-associated protein 6, MDA-6, p21, CDKN1A, CAP20, CDKN1, CIP1, MDA6, PIC1, SDI1, WAF1
<b>Conjugate</b>	Unconjugated
<b>Purification</b>	Affinity chromatography
<b>Storage</b>	2-8°C
<b>Intended use</b>	Research use only
<b>Application</b>	ELISA, FACS, ICC/IF, IHC
<b>Reactivity</b>	Human, Monkey, Mouse, Rat

#### Applications

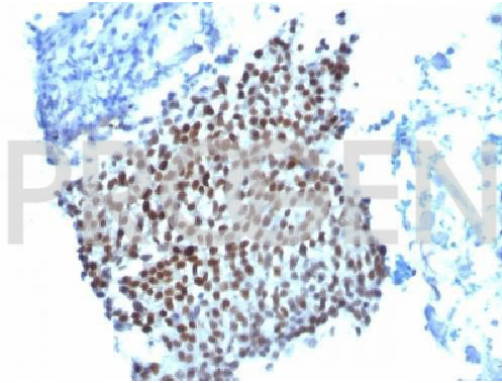
<b>ELISA</b>	Assay dependent
<b>Flow Cytometry (FACS)</b>	0.5-1.0 µg/million cells in 0.1 ml
<b>Immunocytochemistry (ICC)</b>	1:50-1:100 (1-2 µg/ml)
<b>Immunohistochemistry (IHC) - frozen</b>	1:50-1:100 (1-2 µg/ml)
<b>Immunohistochemistry (IHC) - paraffin</b>	1:50-1:100 (1-2 µg/ml; microwave treatment in 10 mM citrate buffer pH 6.0 recommended)

#### Background

WA-1 reacts with human and other mammalian p21, a tumor suppressor protein, belonging to the CDI family. The intracellular protein p21 is a 21 kDa protein, also known as wild-type p53-activated fragment 1 (WAF1). It is an inhibitor of cyclin-dependent kinases (Cdk) and of proliferating-cell nuclear antigen (PCNA). It is induced by wild type p53, but not by mutated p53, by mezerein (anti-leukemic compound) and by interferon-β. Normal cells generally display a rather intense nuclear p21 expression. Loss of p21 expression has been reported in many carcinomas (gastric carcinoma, non-small cell lung carcinoma and thyroid carcinoma).

Positive control: MCF7 cells, UV treated fibroblasts, HeLa cells, skin, colon, or breast carcinoma.

## Product images



Bladder carcinoma