

Product datasheet

anti-Keratin K16 guinea pig polyclonal, serum

Short overview

Cat. No.	GP-K16
Quantity	100 µl

Product description

Host	Guinea pig
Antibody Type	Polyclonal
Immunogen	Synthetic peptide of human keratin K16 (formerly also designated cytokeratin 16; C-KE QSS SSF SQG QSS), coupled to KLH
Formulation	Contains 0.09% sodium azide and 0.5% BSA
UniprotID	P08779 (Human)
Synonym	Keratin, type I cytoskeletal 16, Cytokeratin-16, CK-16, Keratin-16, K16, KRT16, KRT16A
Note	Centrifuge prior to opening
Conjugate	Unconjugated
Purification	Stabilized antiserum
Storage	Short term at 2-8°C; long term storage in aliquots at -20°C; avoid freeze/thaw cycles
Intended use	Research use only
Application	IHC
Reactivity	Human, Mouse

Applications

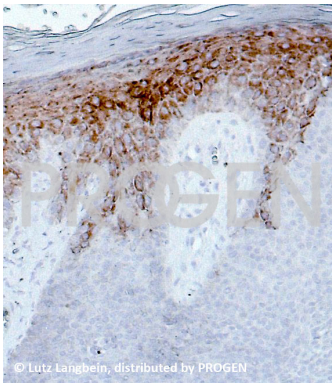
Immunohistochemistry (IHC) - frozen	1:100-1:200
Immunohistochemistry (IHC) - paraffin	1:100-1:200 (microwave treatment recommended)

Background

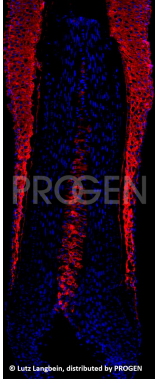
MW 48,000 (pI 5.1) intermediate filament polypeptide, keratin K16, detected by immunohistochemistry in psoriatic skin, in the rete ridges of foot sole epidermis, in tongue, esophagus, exocervix and in squamous cell carcinoma of skin, tongue and cervix. In the hair follicle, staining was restricted to the outer root sheath. Completely non-reactive were cells of non-stratified epithelia (e.g. liver, colon).

Positive control: rete ridges of human foot sole epidermis, psoriatic skin.

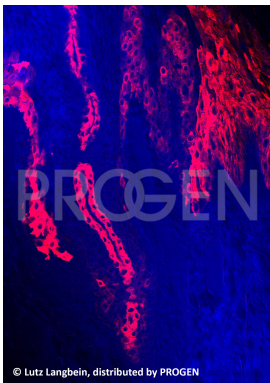
Product images



Human back skin (courtesy of L. Langbein)



Human scalp hair (courtesy of L. Langbein)



Human sole (courtesy of L. Langbein)

References

Publication	Species	Application
Duverger, O. et al. Genetic variants in pachyonychia congenita-associated keratins increase susceptibility to tooth decay. PLoS.Genet. 14, e1007168 (2018).	human	IHC-IF (paraffin)
Langbein, L., Yoshida, H., Praetzel-Wunder, S., Parry, D. A. & Schweizer, J. The Keratins of the Human Beard Hair Medulla: The Riddle in the Middle. J. Invest. Dermatol. 130, 55â€“73 (2010).	human	IHC (frozen)