

## Product datasheet

anti-M13/fd/F1 Filamentous Phages mouse monoclonal, B62-FE2, HRP Conjugate, sample

### Short overview

<b>Cat. No.</b>	61097-HRPS
<b>Quantity</b>	250 µl (100 µg/ml)
<b>Concentration</b>	100 µg/ml

### Product description

<b>Host</b>	Mouse
<b>Antibody Type</b>	Monoclonal
<b>Isotype</b>	IgG2b
<b>Formulation</b>	PBS with HRP stabilizer (Candor 222902)
<b>Conjugate</b>	Peroxidase/HRP
<b>Purification</b>	Affinity chromatography
<b>Storage</b>	2-8°C
<b>Intended use</b>	Research use only
<b>Application</b>	ELISA, Phage display
<b>Reactivity</b>	Filamentous phages F1, Filamentous phages M13, Filamentous phages fd

### Applications

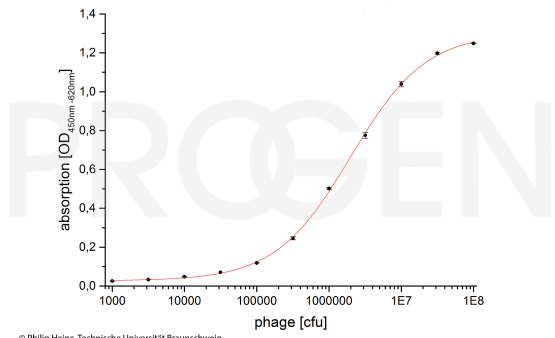
<b>ELISA</b>	1:250-1:1,500 (0.07-0.4 µg/ml)
<b>Phage Display</b>	Immunoassays for the identification of recombinant antigen- or antibody-phages; Detection limit: 1E+07 phage particles

### Background

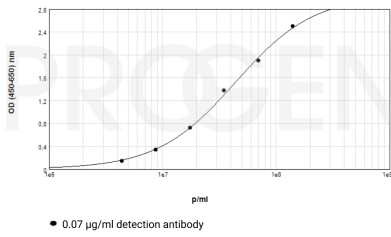
B62-FE2 binds to an epitope on pVIII (phage coat protein) covering the N-terminal region of g8p AEGDDPAKAAFDSLQASAT (Kneissel et al. 1999).

Kneissel, S. et al. Epitope structures recognised by antibodies against the major coat protein (g8p) of filamentous bacteriophage fd (Inoviridae). J. Mol. Biol. 288, 21-8 (1999).

### Product images



ELISA with B62-FE2 HRP conjugate (Cat. No. 61097-HRP) as detection antibody (1:1000; 10 ng antibody per well)(courtesy of P. Heine, TU Braunschweig)



Phage ELISA with B62-FE2 as capture antibody (Cat. No. 61097) and B62-FE2 HRP conjugate (Cat. No. 61097-HRP) as detection antibody (1:1,500 (0.07 µg/ml)).

## References

Publication	Species	Application
<a href="#">Seidel-Greven, M. et al. Isolation and light chain shuffling of a Plasmodium falciparum AMA1-specific human monoclonal antibody with growth inhibitory activity. Malar. J. 20, 1â€“20 (2021).</a>	M13	ELISA
<a href="#">Kneissel, S. et al. Epitope structures recognised by antibodies against the major coat protein (g8p) of filamentous bacteriophage fd (Inoviridae). J. Mol. Biol. 288, 21-8 (1999).</a>	fd	WB
<a href="#">Micheel, B. et al. Production of monoclonal antibodies against epitopes of the main coat protein of filamentous fd phages. J. Immunol. Methods 171, 103-9 (1994).</a>	fd	ELISA,IEM
<a href="#">Rondot, S., Koch, J., Breitling, F. &amp; DÃ¼bel, S. A helper phage to improve single-chain antibody presentation in phage display. Nat. Biotechnol. 19, 75-8 (2001).</a>	M13	ELISA