

Product datasheet

anti-Plakophilin 1 guinea pig polyclonal, serum

Short overview

Cat. No.	GP-PP1
Quantity	100 µl

Product description

Host	Guinea pig
Antibody Type	Polyclonal
Immunogen	Human recombinant plakophilin 1
Formulation	Contains 0.09% sodium azide and 0.5% BSA
UniprotID	Q28161 (Bovine), Q13835 (Human), P97350 (Mouse)
Synonym	Plakophilin-1, Band 6 protein, B6P, PKP1
Note	Centrifuge prior to opening
Conjugate	Unconjugated
Purification	Stabilized antiserum
Storage	Short term at 2-8°C; long term storage in aliquots at -20°C; avoid freeze/thaw cycles
Intended use	Research use only
Application	IHC, WB
Reactivity	Bovine, Human, Mouse

Applications

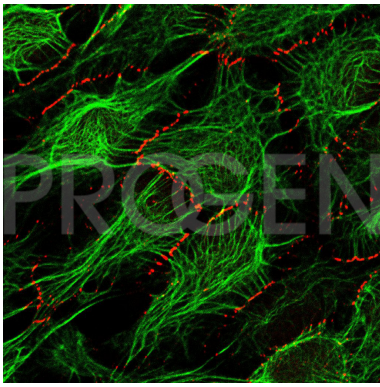
Immunohistochemistry (IHC) - frozen	1:100
Western Blot (WB)	1:1,000

Background

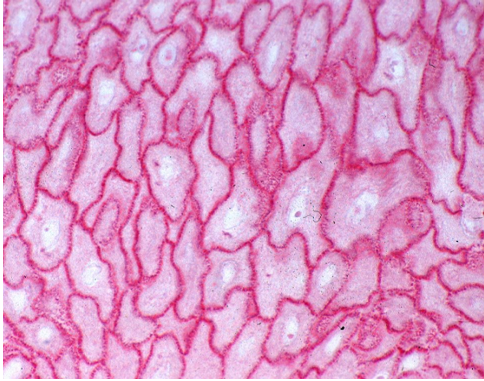
PP1 antiserum shows distinct suprabasal staining of stratified epithelia, localizing plakophilin 1 in desmosomal plaques and in the nucleus. In Western blot analysis the antiserum reacts specifically with the 80 kDa plakophilin 1a and 1b polypeptides.

Reactivity on cultured cell lines: BPH-1 (derived from non-neoplastic prostatic tissue).

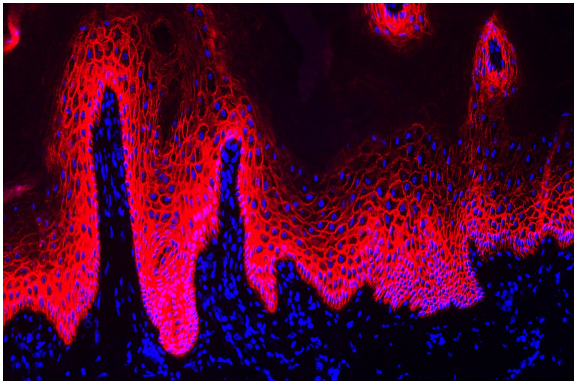
Product images



HaCaT PKP1 (red), cytokeratin (green) (courtesy of L. Langbein)



Human sole (courtesy of L. Langbein)



Human oesophagus (courtesy of L. Langbein)

References

Publication	Species	Application
Kim, M. et al. Plakophilin 1 deficiency in prostatic tumours is correlated with immune cell recruitment and controls the up-regulation of cytokine expression post-transcriptionally. FEBS J. (2022).	human	WB, IHC-IF (paraffin)
Yang, C. et al. Plakophilin 1-deficient cells upregulate SPOCK1: implications for prostate cancer progression. Tumour Biol. 36, 9567â€“77 (2015).	human	WB