

Product datasheet

anti-Thyroglobulin mouse monoclonal, 2H11, ascites fluid

Short overview

Cat. No.	10805
Quantity	1 ml

Product description

Host	Mouse
Antibody Type	Monoclonal
Isotype	IgG1
Clone	2H11
Immunogen	Thyroglobulin isolated from human thyroid
Formulation	Contains 0.09% sodium azide
Note	Centrifuge prior to opening
Conjugate	Unconjugated
Purification	Ascites
Storage	Short term at 2-8°C; long term storage in aliquots at -20°C; avoid freeze/thaw cycles
Intended use	Research use only
Application	IHC, WB
Reactivity	Human, Mouse, Rat

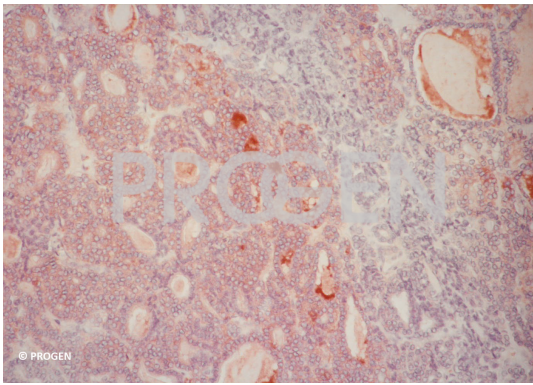
Applications

Immunohistochemistry (IHC) - frozen	1:5-1:10
Immunohistochemistry (IHC) - paraffin	1:5-1:10 (microwave treatment recommended)
Western Blot (WB)	Assay dependent

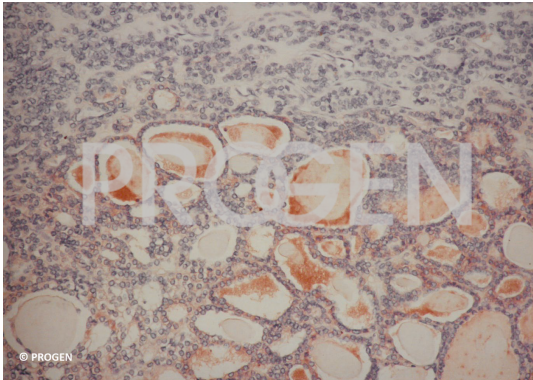
Background

Specifically identifies follicular epithelium of the thyroid. Can be applied for the classification of thyroid neoplasms, especially for the differentiation between follicular and papillary carcinoma (TH-positive) and medullary carcinoma (THnegative). Undifferentiated carcinomas will not react with the antibody. Furthermore, the antibody can be used for the characterization of metastases of unknown primary tumors. In immunohistochemistry the antibody reacts exclusively with follicle epithelium and colloid in the thyroid. Antigen localization: membrane, cytoplasm. Positive control: Thyroid tissue.

Product images



Human follicular carcinoma



Human follicular carcinoma