

Product datasheet

anti-ACTH mouse monoclonal, 2F6, purified

Short overview

Cat. No.	691513
Quantity	1 ml (100 µg/ml)
Concentration	100 µg/ml

Product description

Host	Mouse
Antibody Type	Monoclonal
Isotype	IgG1 kappa
Clone	2F6
Immunogen	ACTH synthetic peptide (aa 1-24) conjugated to KLH
Formulation	PBS with 0.02% sodium azide
UniprotID	P01194 (Rat)
Conjugate	Unconjugated
Purification	Affinity chromatography
Storage	2-8°C
Intended use	Research use only
Application	ELISA, FACS, ICC/IF, IHC
Reactivity	Rat

Applications

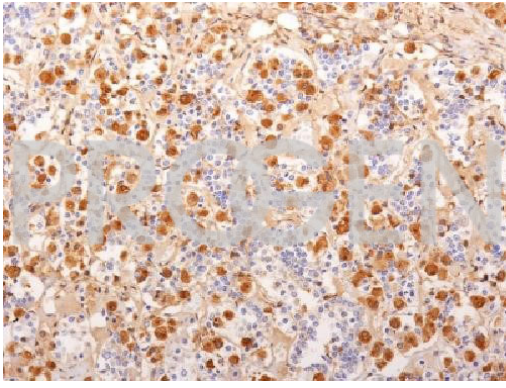
ELISA	Assay dependent
Flow Cytometry (FACS)	0.5-1.0 µg/million cells in 0.1 ml
Immunocytochemistry (ICC)	1:100-1:200 (0.5-1.0 µg/ml)
Immunohistochemistry (IHC) - frozen	1:25-1:50 (2-4 µg/ml)
Immunohistochemistry (IHC) - paraffin	1:25-1:50 (2-4 µg/ml; microwave treatment in 10 mM citrate buffer pH 6.0 recommended)

Background

ACTH (same as corticotropin) is a 39 amino acid active peptide produced by the anterior pituitary. 2F6 is specific to synacthen (aa 1-24 of ACTH); does not react with CLIP (aa 17-39 of ACTH). ACTH is also produced by cells of the immune system (T-cells, B-cells, and macrophages) in response to stimuli associated with stress.

Positive control: pituitary gland, pituitary tumor.

Product images



Human pituitary gland