

Product datasheet

anti-Plectin guinea pig polyclonal, serum

Short overview

Cat. No.	GP21
Quantity	100 µl

Product description

Host	Guinea pig
Antibody Type	Polyclonal
Immunogen	C-terminal C domain of human recombinant Plectin (aa 4367 - 4684)
Formulation	Contains 0.09% sodium azide and 0.5% BSA
UniprotID	A0A3Q1M6Q7 (Bovine),Q15149 (Human),Q9QXS1 (Mouse)
Synonym	Plectin, PCN, PLTN, Hemidesmosomal protein 1, HD1, Plectin-1, PLEC, PLEC1
Note	Centrifuge prior to opening
Conjugate	Unconjugated
Purification	Stabilized antiserum
Storage	Short term at 2-8°C; long term storage in aliquots at -20°C; avoid freeze/thaw cycles
Intended use	Research use only
Application	ICC/IF, IHC, WB
Reactivity	Bovine, Human, Mouse

Applications

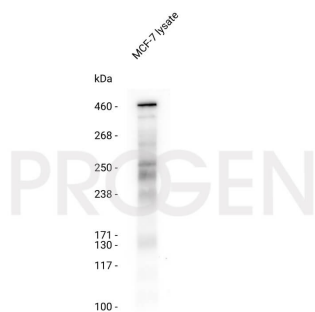
Immunocytochemistry (ICC)	Assay dependent
Immunohistochemistry (IHC) - frozen	1:500
Immunohistochemistry (IHC) - paraffin	1:500 (microwave treatment recommended)
Western Blot (WB)	1:1,000 - 1:10,000

Background

Calculated MW 532,000 protein plectin, localizing to plasma membrane attachment sites of intermediate filaments and microfilaments (actin) such as desmosomes and hemidesmosomes, Z-line structures and dense plaques of striated and smooth muscle. Strong positive reaction is also found with endothelia, fibro-blasts and infiltrating cells (e.g. lymphocytes). Human glia cells are specifically detected.

Reactivity on cultured cell lines: HL-60, Huvec, BMGE, 3T3

Product images



Western-blot analysis (wet-blot) of MCF-7 cell lysate with anti-Plectin antibody (Cat. No. GP21). Western-blot analysis was performed on MCF-7 lysate. Cells were treated with 3x Laemmli + DDT. The PVDF membrane was blocked with 5% dry milk in PBST for 1 h at RT. The primary antibody anti-Plectin (Cat. No. GP21) was diluted in blocking buffer (1:5000) and incubated at RT for 1 h. The secondary antibody goat anti-guinea pig HRP was also diluted in blocking buffer (40 ng/ml) and incubated for 1 h at RT. The bands were visualized by chemiluminescent detection using Pierce™ ECL Western Blotting Substrate.



anti-Plectin guinea pig polyclonal, serum

References

Publication	Species	Application
Nanba, D. et al. EGFR-mediated epidermal stem cell motility drives skin regeneration through COL17A1 proteolysis. J. Cell Biol. 220, (2021).	Human	ICC-IF
Domke, L and Franke, W. The cell-cell junctions of mammalian testes... Cell Tissue Res, 375, 451-482, (2019)	pig	ICC-IF
Rodríguez, M. et al. The Cytoskeleton in the Extraocular Muscles of Desmin Knockout Mice. Invest.Ophthalmol.Vis.Sci. 59, 4847-4855 (2018)	mouse	IHC-IF (frozen)
Schröder, R. et al. Immunogold EM reveals a close association of plectin and the desmin cytoskeleton in human skeletal muscle. Eur. J. Cell Biol. 78, 288-295 (1999).	human,mouse,bovine	WB,IHC (frozen)