

## Product datasheet

anti-Keratin K19 mouse monoclonal, Ks19.1 (A53-B/A2), prediluted, purified

### Short overview

<b>Cat. No.</b>	65010
<b>Quantity</b>	5 ml

### Product description

<b>Host</b>	Mouse
<b>Antibody Type</b>	Monoclonal
<b>Isotype</b>	IgG2a
<b>Clone</b>	Ks19.1 (A53-B/A2)
<b>Immunogen</b>	Keratin K19 of Mr 40 000; from cultured human MCF-7 cells
<b>Formulation</b>	PBS pH 7.4 with 0.5% BSA and 0.09% sodium azide
<b>UniprotID</b>	P08727 (Human)
<b>Synonym</b>	Keratin, type I cytoskeletal 19, Cytokeratin-19, CK-19, Keratin-19, K19, KRT19
<b>Conjugate</b>	Unconjugated
<b>Purification</b>	Affinity chromatography
<b>Storage</b>	Short term at 2-8°C; long term storage in aliquots at -20°C; avoid freeze/thaw cycles
<b>Intended use</b>	Research use only
<b>Application</b>	ICC/IF, IHC, WB
<b>Reactivity</b>	Human

### Applications

<b>Immunocytochemistry (ICC)</b>	Assay dependent
<b>Immunohistochemistry (IHC) - frozen</b>	Ready-to-use
<b>Immunohistochemistry (IHC) - paraffin</b>	Ready-to-use (microwave treatment recommended)
<b>Western Blot (WB)</b>	Assay dependent

### Background

Ks 19.1 represents an excellent marker to discriminate glandular epithelial carcinoma from those of different origin. No reaction with hepatocellular carcinoma. Polypeptide reacting: Mr 40,000 polypeptide (keratin K19; formerly also designated cytokeratin 19) of human glandular epithelia. The epitope has been localized on aa. 311-335 (QSQLSMKAALEDTLAETEARFGAQL) of the alpha-helical fragment.

Tumors specifically detected: all tested adenocarcinoma; cholangio carcinoma of liver; renal cell carcinoma; transitional cell carcinoma of the bladder; ovary carcinoma; squamous cell carcinoma of cervix, bronchus and lung (intermediate type); mesothelioma; carcinoid tumor of bronchus; breast carcinoma; thymoma.

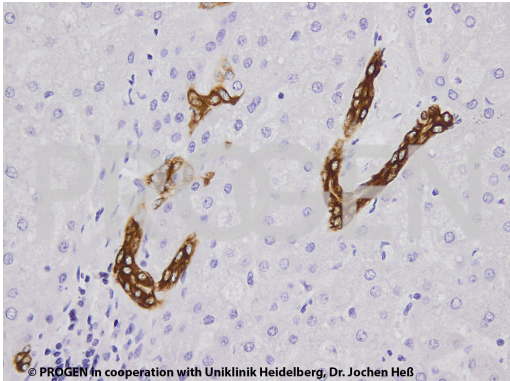
Reactivity on cultured cell lines: MCF-7.

PROGEN Biotechnik GmbH | Maaßstraße 30 | D-69123 Heidelberg

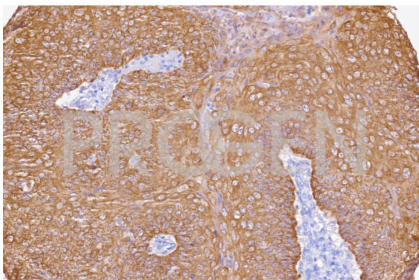
Tel.: +49 (0) 6221 8278-0 | Fax: +49 (0) 6221 8278-24 | Email: [info@progen.com](mailto:info@progen.com) | Web: [www.progen.com](http://www.progen.com)

2024 April 19 / Version: 65010/DS-201021lim | Page 1

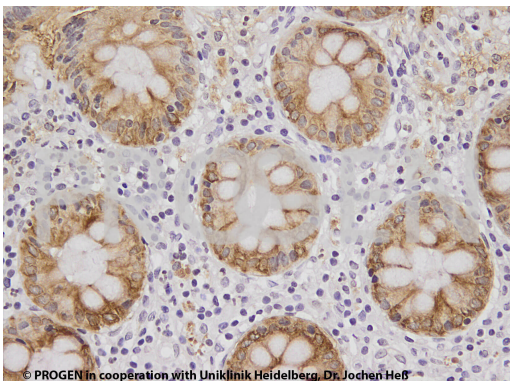
## Product images



IHC analysis of human liver using anti-Keratin K19 antibody (Cat. No. 61010). IHC was performed on formalin fixed paraffin embedded sections. The samples were deparaffinized with xylol and ethanol followed by heat induced antigen retrieval with 10 mM citrate buffer. After preparation the tissue was blocked with normal serum for 20 min at RT. The primary antibody anti-Keratin K19 (Cat. No. 61010) was diluted in PBS (antibody concentration 1 µg/ml) and incubated at 4°C over-night. The secondary antibody ImmPRESS HRP anti-mouse IgG was incubated for 20 min at RT. Slides were incubated with DAB solution until a brown staining is visible and with Haemalaun for a few minutes. The picture was acquired using microscopy (courtesy of J. Hess, University Hospital Heidelberg).



IHC analysis of human head and neck squamous cell carcinoma using anti-Keratin K19 antibody (Cat. No. 690010). IHC was performed on formalin fixed paraffin embedded sections. The samples were deparaffinized with xylol and ethanol followed by heat induced antigen retrieval with 10 mM citrate buffer. After preparation the tissue was blocked with normal serum for 20 min at RT. The primary antibody anti-Keratin K19 (Cat. No. 690010) was diluted in PBS (antibody concentration 0.1 µg/ml) and incubated at 4°C over-night. The secondary antibody ImmPRESS HRP anti-mouse IgG was incubated for 20 min at RT. Slides were incubated with DAB solution until a brown staining is visible and with Haemalaun for a few minutes. The 20x picture was acquired using microscopy (courtesy of J. Hess, University Hospital Heidelberg).



IHC analysis of human colon using anti-Keratin K19 antibody (Cat. No. 61010). IHC was performed on formalin fixed paraffin embedded sections. The samples were deparaffinized with xylol and ethanol followed by heat induced antigen retrieval with 10 mM citrate buffer. After preparation the tissue was blocked with normal serum for 20 min at RT. The primary antibody anti-Keratin K19 (Cat. No. 61010) was diluted in PBS (antibody concentration 10 µg/ml) and incubated at 4°C over-night. The secondary antibody ImmPRESS HRP anti-mouse IgG was incubated for 20 min at RT. Slides were incubated with DAB solution until a brown staining is visible and with Haemalaun for a few minutes. The picture was acquired using microscopy (courtesy of J. Hess, University Hospital Heidelberg).

## References

Publication	Species	Application
<a href="#">Karsten, U. et al. Monoclonal anti-cytokeratin antibody from a hybridoma clone generated by electrofusion. Eur. J. Cancer Clin. Oncol. 21, 733â€“40 (1985).</a>	human	ICC-IF
<a href="#">Demirkesen, C., Hoede, N. &amp; Moll, R. Epithelial markers and differentiation in adnexal neoplasms of the skin: an immunohistochemical study including individual cytokeratins. J. Cutan. Pathol. 22, 518â€“35 (1995).</a>	human	IHC (paraffin)
<a href="#">Mariani, R., Paranjpe, S., Dobrowolski, R. &amp; Weber, G. 14-3-3 targets keratin intermediate filaments to mechanically sensitive cell-cell contacts. Mol Biol Cell. 31, 930-943(2020).</a>	Xenopus	IHC-frozen/IF
<a href="#">Van Der Gaast â€™, A. et al. Evaluation of a new tumour marker in patients with non-small-cell lung cancer: Cyfra 21.1. Br. J. Cancer 69, 525â€“528 (1994).</a>	human	ELISA
<a href="#">Moll, I; Heid, H; Moll, R. Cytokeratin analysis of pilomatrixoma: changes in cytokeratin-type expression during differentiation. J. Invest. Dermatol. 91, 251â€“7 (1988).</a>	human	IHC (frozen)