

Product datasheet

anti-acidic Hair Keratin K36 guinea pig polyclonal, serum

Short overview

Cat. No.	GP-HHA6
Quantity	100 µl

Product description

Host	Guinea pig
Antibody Type	Polyclonal
Immunogen	Synthetic peptide of human acid ic hair (trichocytic) keratin K36 (formerly also designated keratin hHa6; APQVGTQIRTITEEI-C), coupled to KLH
Formulation	Contains 0.09% sodium azide and 0.5% BSA
UniprotID	O76013 (Human)
Synonym	Keratin, type I cuticular Ha6, Hair keratin, type I Ha6, Keratin-36, K36, KRT36, HHA6, HKA6, KRTHA6
Note	Centrifuge prior to opening
Conjugate	Unconjugated
Purification	Stabilized antiserum
Storage	Short term at 2-8°C; long term storage in aliquots at -20°C; avoid freeze/thaw cycles
Intended use	Research use only
Application	IHC, WB
Reactivity	Human

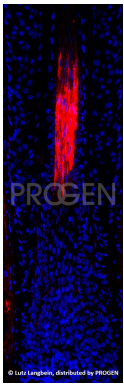
Applications

Immunohistochemistry (IHC) - frozen	1:200 (for enhancement of cortex staining preincubate fixed sections with 0.1% Triton X-100 (in PBS) for 1-5 min prior to first antibody incubation step)
Western Blot (WB)	1:2,000

Background

The antibody stains specifically human hair keratin K36 (hHa6) expressed from the middle region of cortex.

Product images



Human scalp hair (courtesy of L. Langbein)

References

Publication	Species	Application
Langbein, L., Yoshida, H., Praetzel-Wunder, S., Parry, D. A. & Schweizer, J. The Keratins of the Human Beard Hair Medulla: The Riddle in the Middle. J. Invest. Dermatol. 130, 55â€“73 (2010).	human	IHC (frozen)
Langbein, L. et al. The catalog of human hair keratins. I. Expression of the nine type I members in the hair follicle. J. Biol. Chem. 274, 19874â€“84 (1999).	human	WB,IHC (frozen)