

Product datasheet

anti-TFE3 mouse monoclonal, IHC672, purified

Short overview

Cat. No.	691750
Quantity	1 ml

Product description

Host	Mouse
Antibody Type	Monoclonal
Isotype	IgG1
Clone	IHC672
Immunogen	Recombinant Human TFE3
Formulation	Tris pH 7.3-7.7 with 1% BSA and 0.09% sodium azide
UniprotID	P19532 (Human)
Synonym	Transcription factor E3, Class E basic helix-loop-helix protein 33, bHLHe33, TFE3, BHLHE33
Conjugate	Unconjugated
Purification	Affinity chromatography
Storage	2-8°C
Intended use	Research use only
Application	IHC
Reactivity	Human

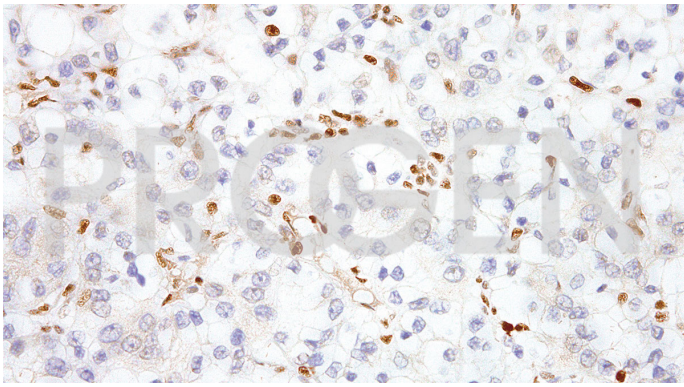
Applications

Immunohistochemistry (IHC) - paraffin	1:50-1:200 (microwave treatment recommended)
--	--

Background

Transcription Factor E3 (TFE3) is a transcription factor that binds to the MUE3-type E-box sequences involved in TGF- signaling. Anti-TFE3 staining is the most sensitive and specific indicator of Xp11 translocation renal cell carcinomas. Since alveolar soft part sarcoma (ASPS) is characterized by a specific chromosomal rearrangement resulting in a chimeric transcription factor (ASPS-1-TFE3), this TFE3 IVD antibody is also a useful diagnostic tool for recognizing ASPS.

Product images



Kidney