

Product datasheet

anti-acidic Hair Keratin K32 guinea pig polyclonal, serum

Short overview

Cat. No.	GP-HHA2
Quantity	100 µl

Product description

Host	Guinea pig
Antibody Type	Polyclonal
Immunogen	Synthetic peptide of human hair (trichocytic) keratin K32 (formerly also designated keratin hHa2; C-VTRTVCVPRTVGM), coupled to KLH
Formulation	Contains 0.09% sodium azide and 0.5% BSA
UniprotID	Q14532 (Human)
Synonym	Keratin, type I cuticular Ha2, Hair keratin, type I Ha2, Keratin-32, K32, KRT32, HHA2, HKA2, KRTHA2
Note	Centrifuge prior to opening
Conjugate	Unconjugated
Purification	Stabilized antiserum
Storage	Short term at 2-8°C; long term storage in aliquots at -20°C; avoid freeze/thaw cycles
Intended use	Research use only
Application	IHC, WB
Reactivity	Human
No reactivity	Mouse

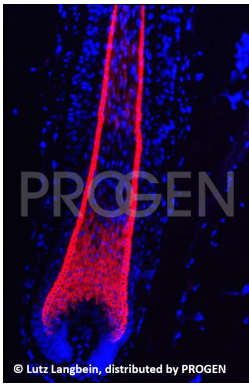
Applications

Immunohistochemistry (IHC) - frozen	1:200 (for enhancement of cortex staining preincubate fixed sections with 0.1% Triton X-100 (in PBS) for 1-5 min prior to first antibody incubation step)
Immunohistochemistry (IHC) - paraffin	1:200 (protease treatment and microwave treatment recommended; for enhancement of cortex staining preincubate fixed sections with 0.1% Triton X-100 (in PBS) for 1-5 min prior to first antibody incubation step)
Western Blot (WB)	1:2,000

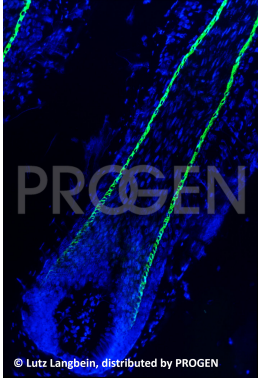
Background

The antiserum stains specifically human hair keratin K32 expressed in the hair cuticle (Mr 45,000 polypeptide) and tumors derived from.

Product images



Human scalp hair (courtesy of L. Langbein)



Human scalp hair (courtesy of L. Langbein)

References

Publication	Species	Application
Wei, H., et al., Organ function is preserved despite reorganization of niche architecture in the hair follicle., Cell Stem Cell 30, 962-972.e6. (2023)		
Langbein, L., Yoshida, H., Praetzel-Wunder, S., Parry, D. A. & Schweizer, J. The Keratins of the Human Beard Hair Medulla: The Riddle in the Middle. J. Invest. Dermatol. 130, 55â€“73 (2010).	human	IHC (frozen)
Langbein, L. et al. Characterization of a Novel Human Type II Epithelial Keratin K1b, Specifically Expressed in Eccrine Sweat Glands. J. Invest. Dermatol. 125, 428â€“444 (2005).	human	IHC (frozen)
Langbein, L., Spring, H., Rogers, M. A., Praetzel, S. & Schweizer, J. Hair keratins and hair follicle-specific epithelial keratins. Methods Cell Biol 78, 413â€“451 (2004).	human	IHC (frozen)

References

Publication	Species	Application
Wei, H., et al., Organ function is preserved despite reorganization of niche architecture in the hair follicle., Cell Stem Cell 30, 962-972.e6. (2023)		
Langbein, L., Yoshida, H., Praetzel-Wunder, S., Parry, D. A. & Schweizer, J. The Keratins of the Human Beard Hair Medulla: The Riddle in the Middle. J. Invest. Dermatol. 130, 55â€“73 (2010).	human	IHC (frozen)
Langbein, L. et al. Characterization of a Novel Human Type II Epithelial Keratin K1b, Specifically Expressed in Eccrine Sweat Glands. J. Invest. Dermatol. 125, 428â€“444 (2005).	human	IHC (frozen)
Langbein, L., Spring, H., Rogers, M. A., Praetzel, S. & Schweizer, J. Hair keratins and hair follicle-specific epithelial keratins. Methods Cell Biol 78, 413â€“451 (2004).	human	IHC (frozen)