

Product datasheet

anti-Type I Hair Keratin K39 (human) guinea pig polyclonal, serum

Short overview

Cat. No.	GP-K39
Quantity	100 µl

Product description

Host	Guinea pig
Antibody Type	Polyclonal
Immunogen	Synthetic peptide of human type I (acidic) hair (trichocytic) keratin K39 (former designation keratin Ka35): DTKGC TTTNSPSTP, coupled to KLH
Formulation	Contains 0.09% sodium azide and 0.5% BSA
UniprotID	Q6A163 (Human), Q6IFX4 (Mouse)
Synonym	Keratin, type I cytoskeletal 39, Cytokeratin-39, CK-39, Keratin-39, K39, Type I hair keratin Ka35, KRT39, KA35
Note	Centrifuge prior to opening
Conjugate	Unconjugated
Purification	Stabilized antiserum
Storage	Short term at 2-8°C; long term storage in aliquots at -20°C; avoid freeze/thaw cycles
Intended use	Research use only
Application	IHC
Reactivity	Human, Mouse

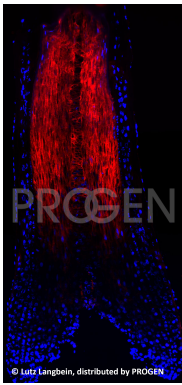
Applications

Immunohistochemistry (IHC) - frozen	1:100 (for enhancement of staining preincubate fixed sections with 0.1% Triton X-100 (in PBS) for 1-5 min prior to first antibody incubation step)
Immunohistochemistry (IHC) - paraffin	1:100 (for enhancement of staining preincubate fixed sections with 0.1% Triton X-100 (in PBS) for 1-5 min prior to first antibody incubation step)

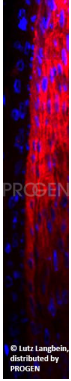
Background

The antiserum stains specifically human hair keratin K39 ex-expressed in the late hair cortex and late cuticle.

Product images



Human beard hair (courtesy of L. Langbein)



Human beard hair (courtesy of L. Langbein)

References

Publication	Species	Application
Langbein, L., Yoshida, H., Praetzel-Wunder, S., Parry, D. A. & Schweizer, J. The Keratins of the Human Beard Hair Medulla: The Riddle in the Middle. J. Invest. Dermatol. 130, 55â€“73 (2010).	human	IHC (frozen)
Langbein, L. et al. Novel type I hair keratins K39 and K40 are the last to be expressed in differentiation of the hair: completion of the human hair keratin catalog. J. Invest. Dermatol. 127, 1532â€“1535 (2007).	human	IHC (frozen)