

## Product datasheet

### anti-CD20 mouse monoclonal, 93-1B3, purified

#### Short overview

<b>Cat. No.</b>	691566
<b>Quantity</b>	1 ml (100 µg/ml)
<b>Concentration</b>	100 µg/ml

#### Product description

<b>Host</b>	Mouse
<b>Antibody Type</b>	Monoclonal
<b>Isotype</b>	IgG1 kappa
<b>Clone</b>	93-1B3
<b>Immunogen</b>	Stimulated human leucocytes
<b>Formulation</b>	PBS with 0.02% sodium azide
<b>UniprotID</b>	P11836 (Human)
<b>Synonym</b>	B-lymphocyte antigen CD20, B-lymphocyte surface antigen B1, Bp35, Leukocyte surface antigen Leu-16, Membrane-spanning 4-domains subfamily A member 1, CD antigen CD20, MS4A1, CD20
<b>Conjugate</b>	Unconjugated
<b>Purification</b>	Affinity chromatography
<b>Storage</b>	2-8°C
<b>Intended use</b>	Research use only
<b>Application</b>	FACS, IHC
<b>Reactivity</b>	Human

#### Applications

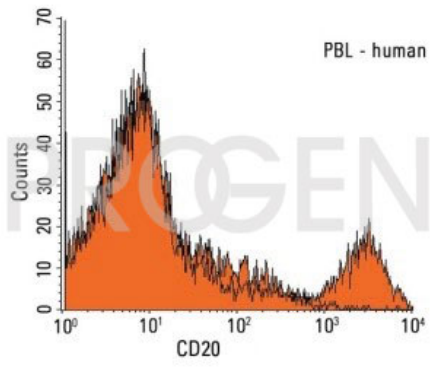
<b>Flow Cytometry (FACS)</b>	0.5-1.0 µg/million cells in 0.1 ml
<b>Immunohistochemistry (IHC) - frozen</b>	1:50-1:100 (1-2 µg/ml)

#### Background

93-1B3 binds with CD20, which is a 30/33 kDa non-glycosylated transmembrane phosphoprotein with three extensive hydrophobic regions. CD20 is involved in regulation of B-cell activation. It is expressed on the surface of all B-cells beginning at the pro-B phase (CD45R+, CD117+) and progressively increasing in concentration until maturity. Plasma cells are negative. CD20 is retained on many B-cell malignancies. CD20 positive cells are also sometimes found in cases of Hodgkin's disease, myeloma, and thymoma. 93-1B3 has been clustered at the IIIrd and Vth HLDA Workshops.

Positive control: Daudi, Raji, U266, human lymphocytes, lymph nodes and tonsils.

#### Product images



FACS with human peripheral blood lymphocytes