

Product datasheet

protag-HiSec anti-chicken IgY-X2 Alexa 647

Short overview

| | |
|-----------------|--------|
| Cat. No. | 80412 |
| Quantity | 500 µl |

Product description

| | |
|----------------------|--|
| Host | Llama/alpaca |
| Antibody Type | Recombinant, produced in E.coli |
| Isotype | Single-domain antibody |
| Clone | 3G2 |
| Immunogen | Chicken IgY |
| Formulation | 5 µM fluorescently labeled single-domain antibody in buffered saline, 50% glycerol, 0.09% sodium azide |
| Note | Centrifuge prior to opening |
| Conjugate | Alexa 647 |
| Purification | Affinity chromatography |
| Storage | Up to 3 months: -20°C; up to 12 months: -80°C or below; protect from light! |
| Intended use | Research use only |
| Application | ICC/IF, IHC |
| Reactivity | Chicken IgY |
| No reactivity | Goat IgG, Guinea pig IgG, Mouse IgG, Rabbit IgG, Rat IgG |

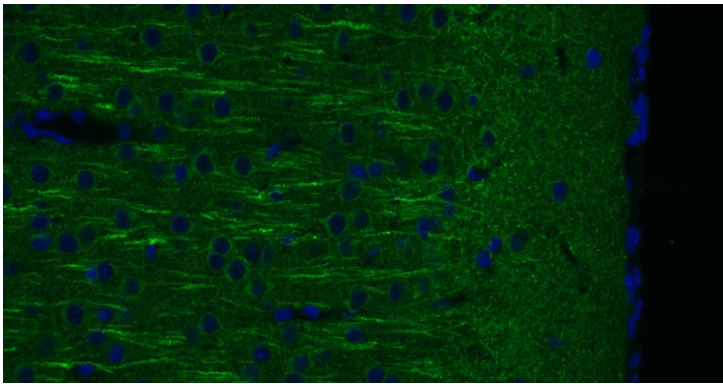
Applications

| | |
|--|-------|
| Immunocytochemistry (ICC) | 1:500 |
| Immunohistochemistry (IHC) - frozen | 1:500 |
| Immunohistochemistry (IHC) - paraffin | 1:500 |

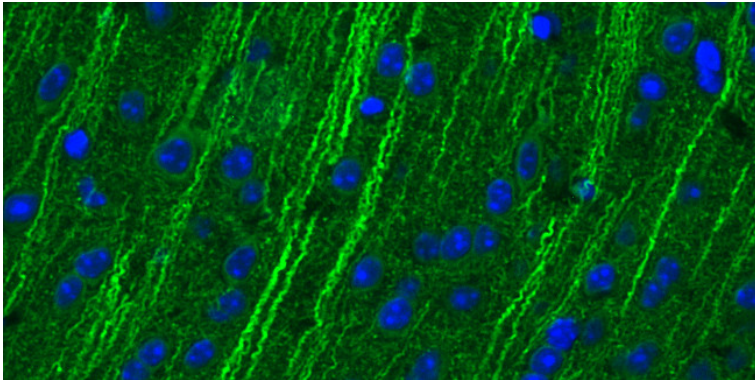
Background

protag-HiSec anti-chicken IgY is an isotype- and species-specific camelid single-domain antibody (sdAb) produced by NanoTag Biotechnologies GmbH. It is directed against chicken IgY and contains two site-specifically coupled fluorophores per protag molecule. One single-domain antibody targets two fluorophores to a primary chicken antibody. Due to the monovalent binding, there are no primary and secondary antibody clusters formed, leading to better epitope accessibility and a more precise localization. There are no batch-to-batch variations, since the protag-HiSecs single-domain antibodies are recombinantly expressed.

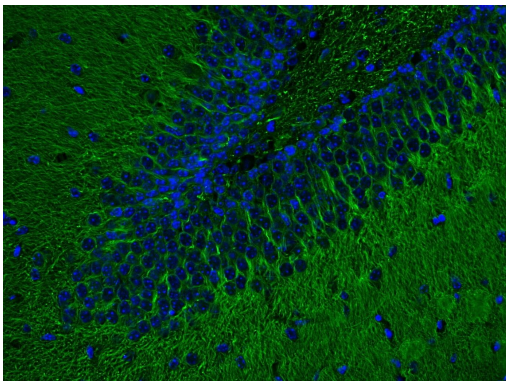
Product images



Indirect immunostaining of PFA fixed mouse brain section with chicken anti-MAP2 and protag-HiSec anti-chicken IgY-X2 Sulfo-Cyanin 5 (green). Nuclei have been visualized by DAPI staining (blue)(courtesy of NanoTag Biotechnologies GmbH).



Mouse brain section with chicken anti-MAP 2 and protag-HiSec anti-chicken IgY-X2 Sulfo-Cyanin 5 (Cy5)(green). Nuclei were stained using DAPI (blue)(courtesy of NanoTag Biotechnologies GmbH).



Mouse cerebellum section stained with chicken anti-MAP 2 and protag-HiSec anti-chicken IgY-X2 Sulfo-Cyanin 5 (Cy5)(green). Nuclei were stained using DAPI (blue)(courtesy of NanoTag Biotechnologies GmbH).