

## Product datasheet

### anti-Keratin K28 guinea pig polyclonal, serum

#### Short overview

<b>Cat. No.</b>	GP-K28
<b>Quantity</b>	100 µl

#### Product description

<b>Host</b>	Guinea pig
<b>Antibody Type</b>	Polyclonal
<b>Immunogen</b>	Synthetic peptide of human keratin K28 (formerly also designated keratin K25irs4); aa 444-457 (C-HIS EEK TSK MTN GK), coupled to KLH
<b>Formulation</b>	Contains 0.09% sodium azide and 0.5% BSA
<b>UniprotID</b>	Q7Z3Y7 (Human), A6BLY7 (Mouse)
<b>Synonym</b>	Keratin, type I cytoskeletal 28, Cytokeratin-28, CK-28, Keratin-25D, K25D, Keratin-28, K28, Type I inner root sheath-specific keratin-K25irs4, KRT28, KRT25D
<b>Note</b>	Centrifuge prior to opening
<b>Conjugate</b>	Unconjugated
<b>Purification</b>	Stabilized antiserum
<b>Storage</b>	Short term at 2-8°C; long term storage in aliquots at -20°C; avoid freeze/thaw cycles
<b>Intended use</b>	Research use only
<b>Application</b>	IHC
<b>Reactivity</b>	Human, Mouse

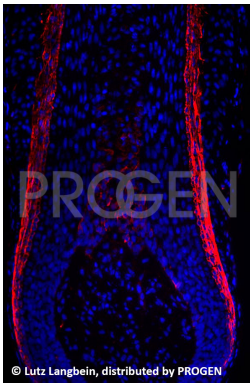
#### Applications

<b>Immunohistochemistry (IHC) - frozen</b>	1:100-1:200
--	-------------

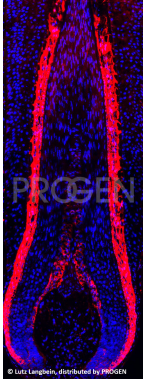
#### Background

Specific for human irs-specific keratin K28. The antiserum stains specifically the Henle, Huxley and cuticle layer of the inner root sheath (irs) of the hair follicle. Negative on other epithelia.

#### Product images



Human beard hair (courtesy of L. Langbein)



Human beard hair (courtesy of L. Langbein)

References

Publication	Species	Application
<a href="#">Langbein, L., Yoshida, H., Praetzel-Wunder, S., Parry, D. A. &amp; Schweizer, J. The Keratins of the Human Beard Hair Medulla: The Riddle in the Middle. J. Invest. Dermatol. 130, 55â€“73 (2010).</a>	human	IHC (frozen)