

Product datasheet

anti-PSA mouse monoclonal, EBS-T-231, purified

Short overview

Cat. No.	691677
Quantity	1 ml (100 µg/ml)
Concentration	100 µg/ml

Product description

Host	Mouse
Antibody Type	Monoclonal
Isotype	IgG1 kappa
Clone	EBS-T-231
Immunogen	p30 enriched preparation of human sperm plasma
Formulation	PBS with 0.02% sodium azide
UniprotID	P07288 (Human)
Synonym	Prostate-specific antigen, PSA, EC 3.4.21.77, Gamma-seminoprotein, Semin, Kallikrein-3, P-30 antigen, Semenogelase, KLK3, APS
Conjugate	Unconjugated
Purification	Affinity chromatography
Storage	2-8°C
Intended use	Research use only
Application	ELISA, FACS, ICC/IF, IHC, WB
Reactivity	Human

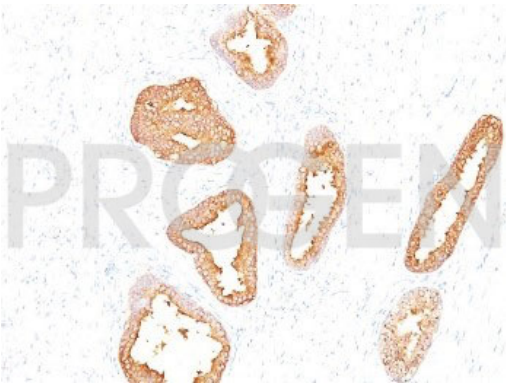
Applications

ELISA	Assay dependent
Flow Cytometry (FACS)	0.5-1.0 µg/million cells in 0.1 ml
Immunocytochemistry (ICC)	1:100-1:200 (0.5-1.0 µg/ml)
Immunohistochemistry (IHC) - frozen	1:50-1:100 (1-2 µg/ml)
Immunohistochemistry (IHC) - paraffin	1:50-1:100 (1-2 µg/ml; microwave treatment in 10 mM citrate buffer pH 6.0 recommended)
Western Blot (WB)	1:100 (1 µg/ml)

Background

EBS-T-231 recognizes PSA as p30 in ELISA and Western blots. Makes excellent pair with 1A7G6B6 for PSA tumor marker tests, including rapid tests. EBS-T-231 was typed at the ISOBM TD-3 workshop.

Positive control: prostate or prostate carcinoma.



Prostate carcinoma