

Product datasheet

anti-CD6 mouse monoclonal, EBS-CD-005, purified

Short overview

Cat. No.	691554
Quantity	1 ml (100 µg/ml)
Concentration	100 µg/ml

Product description

Host	Mouse
Antibody Type	Monoclonal
Isotype	IgG1 kappa
Clone	EBS-CD-005
Immunogen	Cells of a human CD8+ human CTL clone
Formulation	PBS with 0.02% sodium azide
UniprotID	P30203 (Human)
Synonym	T-cell differentiation antigen CD6, T12, TP120, CD antigen CD6 [Cleaved into: Soluble CD6], CD6
Conjugate	Unconjugated
Purification	Affinity chromatography
Storage	2-8°C
Intended use	Research use only
Application	FACS, ICC/IF, IHC
Reactivity	Human

Applications

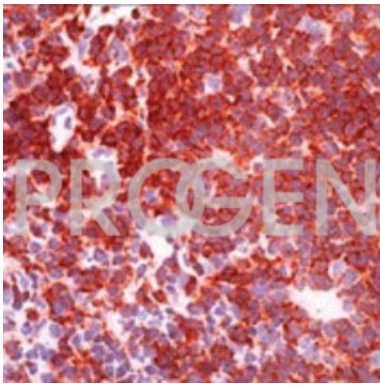
Flow Cytometry (FACS)	0.5-1.0 µg/million cells in 0.1 ml
Immunocytochemistry (ICC)	1:100-1:200 (0.5-1.0 µg/ml)
Immunohistochemistry (IHC) - frozen	1:50-1:100 (1-2 µg/ml)

Background

EBS-CD-005 recognizes the CD6 molecule, a single chain transmembrane glycoprotein of 120 kDa, which is expressed on the majority of mature T-cells and mature thymocytes. A B-cell subset is weakly positive and B-CLL's may also be reactive. CD6 is a type 1 transmembrane glycoprotein that is tyrosine phosphorylated during TCR-mediated T-cell activation. CD6 shows significant homology to CD5. Antibodies to CD6 are used to deplete T-cells from bone marrow transplants to prevent graft versus host disease.

Positive control: 293T, Ramos or MOLT-4 cells, lymph node and tonsil.

Product images



Human tonsil