

## Product datasheet

anti-Human Myeloid Specific Marker mouse monoclonal, BM-4, purified

### Short overview

|                      |                  |
|----------------------|------------------|
| <b>Cat. No.</b>      | 691536           |
| <b>Quantity</b>      | 1 ml (100 µg/ml) |
| <b>Concentration</b> | 100 µg/ml        |

### Product description

|                      |  |
|----------------------|--|
| <b>Host</b>          | Mouse  |
| <b>Antibody Type</b> | Monoclonal   |
| <b>Isotype</b>       | IgG1 kappa   |
| <b>Clone</b>         | BM-4   |
| <b>Immunogen</b>     | Nuclei from pokeweed mitogen stimulated human peripheral blood lymphocytes |
| <b>Formulation</b>   | PBS with 0.02% sodium azide  |
| <b>Conjugate</b>     | Unconjugated   |
| <b>Purification</b>  | Affinity chromatography  |
| <b>Storage</b>       | 2-8°C  |
| <b>Intended use</b>  | Research use only  |
| <b>Application</b>   | ICC/IF, IHC  |
| <b>Reactivity</b>    | Human  |

### Applications

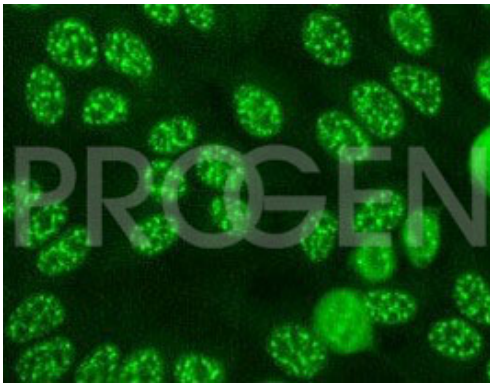
|  |                             |
|--|-----------------------------|
| <b>Immunocytochemistry (ICC)</b>           | 1:100-1:200 (0.5-1.0 µg/ml) |
| <b>Immunohistochemistry (IHC) - frozen</b> | 1:50-1:100 (1-2 µg/ml)      |

### Background

BM-4 recognizes a nuclear antigen expressed in human granulocytes (83%) monocytes (20%) and myeloid precursor cells residing in lymphoid and non-lymphoid tissues. BM-4 is an early marker of myeloid differentiation. It also reacts with a subset of myeloid leukemia cells. BM-4 has no reactivity with any other cell type in human tissues.

Positive control: human blood or bone marrow.

### Product images



Staining of nuclear antigen