

Product datasheet

anti-CD5 mouse monoclonal, Cris-1, purified

Short overview

Cat. No.	691553
Quantity	1 ml (100 µg/ml)
Concentration	100 µg/ml

Product description

Host	Mouse
Antibody Type	Monoclonal
Isotype	IgG2a kappa
Clone	Cris-1
Immunogen	Stimulating human leukocytes
Formulation	PBS with 0.02% sodium azide
UniprotID	P06127 (Human)
Synonym	T-cell surface glycoprotein CD5, Lymphocyte antigen T1/Leu-1, CD antigen CD5, CD5, LEU1
Conjugate	Unconjugated
Purification	Affinity chromatography
Storage	2-8°C
Intended use	Research use only
Application	FACS, ICC/IF, IHC, IP
Reactivity	Human, Monkey

Applications

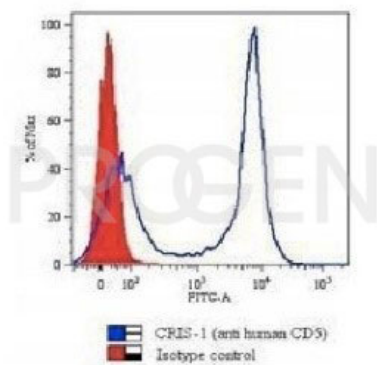
Flow Cytometry (FACS)	0.5-1.0 µg/million cells in 0.1 ml
Immunocytochemistry (ICC)	1:100-1:200 (0.5-1.0 µg/ml)
Immunohistochemistry (IHC) - frozen	1:50-1:100 (1-2 µg/ml)
Immunoprecipitation (IP)	Assay dependent

Background

Cris-1 reacts with a 67 kDa protein, consistent with human CD5. Cris-1 was assigned at the 1st and 3rd International Leucocyte Typing Workshops. CD5 is a pan T-cell marker that also reacts with a B-cell marker subset and a range of neoplastic B-cells, e.g. chronic lymphocytic leukemia/small lymphocytic lymphoma (CLL/SLL), mantle cell lymphoma, and a subset (~10%) of diffuse large B-cell lymphoma. CD5 aberrant expression is useful in the diagnosis of mature T-cell neoplasms.

Positive control: 293T, Ramos, or MOLT-4 cells, tonsil.

Product images



FACS with human PBMC's