

Product datasheet

protag-HiSec anti-mouse IgG kLC-X2 Alexa 647

Short overview

Cat. No.	80212
Quantity	500 µl

Product description

Host	Llama/alpaca
Antibody Type	Recombinant, produced in E.coli
Isotype	Single-domain antibody
Clone	1A23
Immunogen	Mouse IgG kLC
Formulation	5 µM fluorescently labeled single-domain antibody in buffered saline, 50% glycerol, 0.09% sodium azide
Note	Centrifuge prior to opening
Conjugate	Alexa 647
Purification	Affinity chromatography
Storage	Up to 3 months: -20°C; up to 12 months: -80°C or below; protect from light!
Intended use	Research use only
Application	FACS, ICC/IF, IHC, WB
Reactivity	Mouse IgG kappa light chain
No reactivity	Chicken IgG, Goat IgG, Guinea pig IgG, Rabbit IgG, Rat IgG

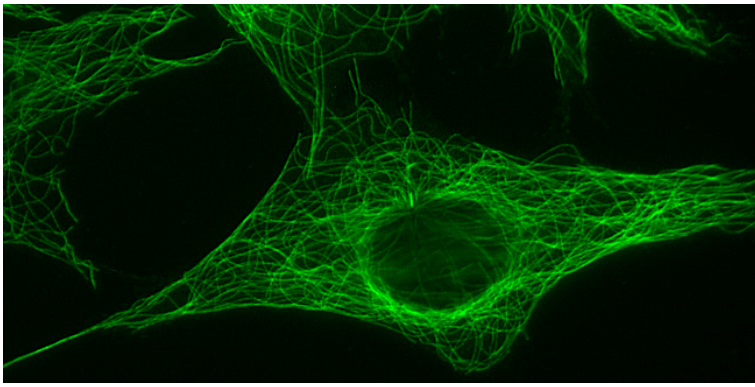
Applications

Flow Cytometry (FACS)	1:500
Immunocytochemistry (ICC)	1:500
Immunohistochemistry (IHC) - frozen	1:500
Immunohistochemistry (IHC) - paraffin	1:500
Western Blot (WB)	1:500

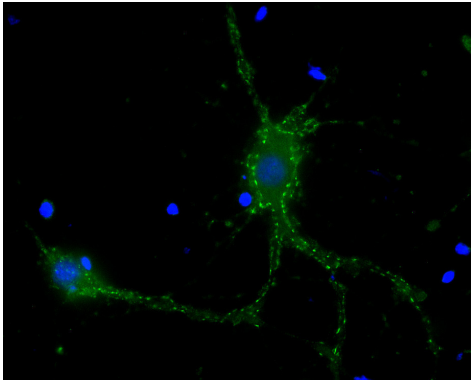
Background

protag-HiSec anti-mouse IgG is an isotype- and species-specific camelid single-domain antibody (sdAb) produced by NanoTag Biotechnologies GmbH. It is directed against mouse IgG and contains two site-specifically coupled fluorophores per protag molecule. One single-domain antibody targets two fluorophores to a primary mouse antibody. Due to the monovalent binding, there are no primary and secondary antibody clusters formed, leading to better epitope accessibility and a more precise localization. There are no batch-to-batch variations, since the protag-HiSecs single-domain antibodies are recombinantly expressed.

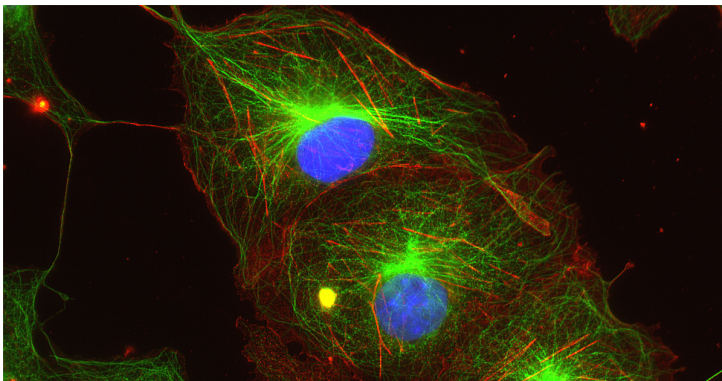
Product images



3T3 cells stained with mouse anti-alpha-tubulin and protag-HiSec anti-mouse IgG-X2 Abberior® Star 488 (courtesy of NanoTag Biotechnologies GmbH).



Rat hippocampus neurons stained with mouse anti-Synaptotagmin 1 and protag-HiSec anti-mouse IgG-X2 Atto 488 (Cat. No. 80205; green). Nuclei were stained using DAPI (blue) (courtesy of NanoTag Biotechnologies GmbH).



Multiplexing: Indirect immunostaining of PFA fixed Cos7 cells with an anti-beta-Actin primary antibody detected with protag-HiSec anti-mouse IgG kLC-X2 Atto 565 (represented in red) and an anti-alpha-Tubulin primary antibody detected with protag-HiSec anti-mouse IgG kLC-X2 Atto 488 (Cat. No. 80205, represented in green). Nuclei were visualized by DAPI staining (blue) (courtesy of NanoTag Biotechnologies GmbH).