

Product datasheet

anti-CDw75 mouse monoclonal, LN-1, purified

Short overview

Cat. No.	691622
Quantity	1 ml (100 µg/ml)
Concentration	100 µg/ml

Product description

Host	Mouse
Antibody Type	Monoclonal
Isotype	IgM kappa
Clone	LN-1
Immunogen	Nuclei from pokeweed mitrogen-stimulated PBL
Formulation	PBS with 0.02% sodium azide
Conjugate	Unconjugated
Purification	Affinity chromatography
Storage	2-8°C
Intended use	Research use only
Application	FACS, ICC/IF, IHC
Reactivity	Human

Applications

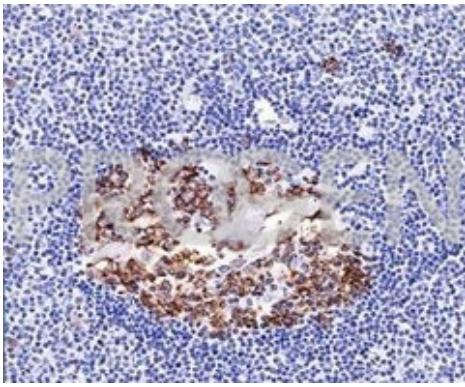
Flow Cytometry (FACS)	0.5-1.0 µg/million cells in 0.1 ml
Immunocytochemistry (ICC)	1:100-1:200 (0.5-1.0 µg/ml)
Immunohistochemistry (IHC) - frozen	1:50-1:100 (1-2 µg/ml)
Immunohistochemistry (IHC) - paraffin	1:50-1:100 (1-2 µg/ml; microwave treatment in 10 mM citrate buffer pH 6.0 recommended)

Background

LN-1 reacts with CDw75, a neuraminidase sensitive cell surface sialoglycan, which is present on the cell membrane and cytoplasm of germinal center B-cells and derived lymphomas. CDw75 has a function in cell adhesion and is the ligand for CD22. LN-1 reacts with RBC precursors in bone marrow, ductal and ciliated epithelial cells of kidney, breast, prostate, pancreas, lung, and with gioblastomas and astrocytoma's, and also Reed Sternberg cells in Hodgkin's disease.

Positive control: HeLa or Daudi cells. Germinal center B-cell in a lymph node or tonsil. Use LN-1's ability to stain the surface of erythrocytes as an internal positive control.

Product images



Human spleen