

## Product datasheet

### anti-Insulin mouse monoclonal, 2D11-H5, purified

#### Short overview

<b>Cat. No.</b>	691512
<b>Quantity</b>	1 ml (100 µg/ml)
<b>Concentration</b>	100 µg/ml

#### Product description

<b>Host</b>	Mouse
<b>Antibody Type</b>	Monoclonal
<b>Isotype</b>	IgG1 kappa
<b>Clone</b>	2D11-H5
<b>Immunogen</b>	Purified pig insulin, conjugated to KLH
<b>Formulation</b>	PBS with 0.02% sodium azide
<b>UniprotID</b>	P01317 (Bovine), P01308 (Human), P01326 (Mouse), P01315 (Pig), P01323 (Rat)
<b>Synonym</b>	Insulin [Cleaved into: Insulin B chain; Insulin A chain], INS
<b>Conjugate</b>	Unconjugated
<b>Purification</b>	Affinity chromatography
<b>Storage</b>	2-8°C
<b>Intended use</b>	Research use only
<b>Application</b>	ELISA, FACS, ICC/IF, IHC
<b>Reactivity</b>	Bovine, Human, Mouse, Pig, Rat

#### Applications

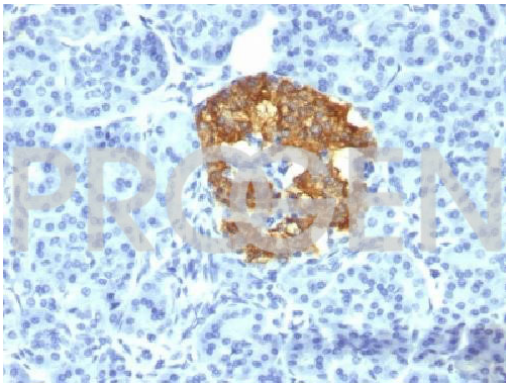
<b>ELISA</b>	Assay dependent
<b>Flow Cytometry (FACS)</b>	0.5-1.0 µg/million cells in 0.1 ml
<b>Immunocytochemistry (ICC)</b>	1:100-1:200 (0.5-1.0 µg/ml)
<b>Immunohistochemistry (IHC) - frozen</b>	1:50-1:100 (1-2 µg/ml)
<b>Immunohistochemistry (IHC) - paraffin</b>	1:50-1:100 (1-2 µg/ml; microwave treatment in 10 mM citrate buffer pH 6.0 recommended)

#### Background

Insulin is a protein consisting of an alpha-chain of 21 amino acids and a beta-chain of 30 amino acids and produced in the beta-cells of the pancreas. 2D11-H5 is a specific insulin antibody as tested by ELISA and on human pancreatic tissue.

Positive control: MIA, PaCa-2 cells, pancreas or insulinoma.

#### Product images



Human pancreas