

Product datasheet

anti-Keratin K15 guinea pig polyclonal, serum

Short overview

Cat. No.	GP-K15
Quantity	100 µl

Product description

Host	Guinea pig
Antibody Type	Polyclonal
Immunogen	Synthetic peptide of human keratin K15 (formerly also designated cytokeratin 15; SNFHINVEESVDGQ-C), coupled to KLH
Formulation	Contains 0.09% sodium azide and 0.5% BSA
Stability	Guinea pig polyclonal (GPK15.2)
UniprotID	P19012 (Human), Q61414 (Mouse)
Synonym	Keratin, type I cytoskeletal 15, Cytokeratin-15, CK-15, Keratin-15, K15, KRT15, KRTB
Note	Centrifuge prior to opening
Conjugate	Unconjugated
Purification	Stabilized antiserum
Storage	Short term at 2-8°C; long term storage in aliquots at -20°C; avoid freeze/thaw cycles
Intended use	Research use only
Application	IHC
Reactivity	Human, Mouse

Applications

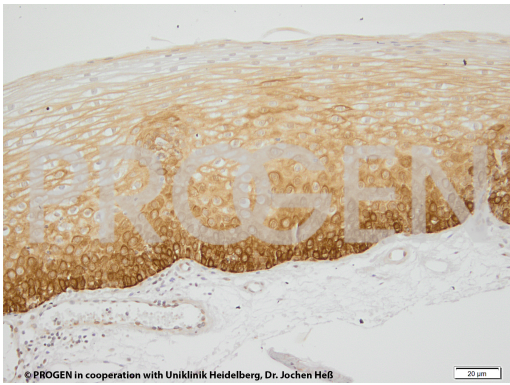
Immunohistochemistry (IHC) - frozen	1:200-1:500
Immunohistochemistry (IHC) - paraffin	1:200-1:500 (protease treatment and/or microwave treatment recommended)

Background

MW 50,000 (pI 4.9) intermediate filament polypeptide, keratin K15, detected by immunohistochemistry in basal cells of stratified epithelia (including epidermis, tongue, esophagus, exocervix) and complex stratified epithelia (e.g. broncheal epithelium), in luminal epithelia of mammary, salivary and sweat gland. In the hair follicle, staining was restricted to the basal cell layer of the outer root sheath. Completely non-reactive were cells of liver, colon.

Positive control: sweat glands of human skin (e.g. foot sole).

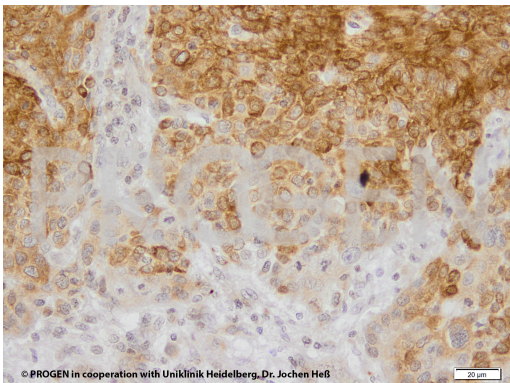
Product images



Human oral mucosa (courtesy of J. Heß, University Hospital Heidelberg)



Human oral mucosa (courtesy of J. Heß, University Hospital Heidelberg)



Human HNSCC (courtesy of J. Heß, University Hospital Heidelberg)