

Product datasheet

anti-MLH1 mouse monoclonal, IHC409, purified

Short overview

Cat. No.	691743
Quantity	1 ml

Product description

Host	Mouse
Antibody Type	Monoclonal
Isotype	IgG2a
Clone	IHC409
Immunogen	Recombinant Human MLH1
Formulation	Tris pH 7.3-7.7 with 1% BSA and 0.09% sodium azide
UniprotID	P40692 (Human)
Synonym	DNA mismatch repair protein Mlh1, MutL protein homolog 1, MLH1, COCA2
Conjugate	Unconjugated
Purification	Affinity chromatography
Storage	2-8°C
Intended use	Research use only
Application	IHC
Reactivity	Human

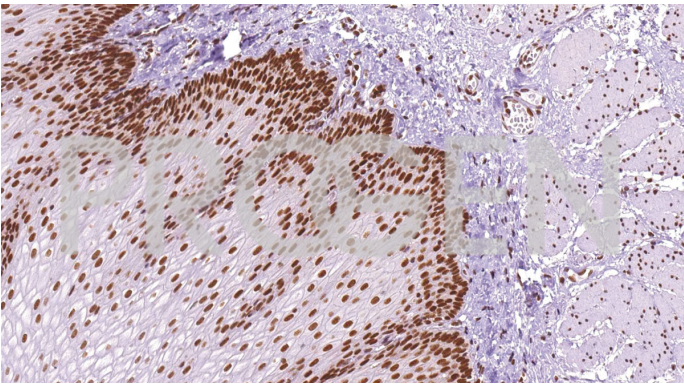
Applications

Immunohistochemistry (IHC) - paraffin	1:50-1:200 (microwave treatment recommended)
--	--

Background

MutL Homolog 1 (MLH1) is a protein involved in the mismatch-repair pathway. This protein is commonly associated with hereditary non-polyposis colorectal cancer, as the MLH1 gene is frequently mutated in patients with this cancer. Studies have shown MLH1 to be deficient in a high percentage of patients with microsatellite instability, as well as endometrial and ovarian cancers. Use of Anti-MLH1 is optimized when paired in an IHC panel with MSH6, MSH2, and PMS2. Anti-MLH1 is useful in the detection of MLH1 in a number of normal and neoplastic tissues, and for identifying a loss of MLH1 in tumours that are microsatellite-unstable.

Product images



Esophagus