

## Product datasheet

### anti-MFG-E8/ Lactadherin/p47 mouse monoclonal, MFG-06, purified

#### Short overview

<b>Cat. No.</b>	691710
<b>Quantity</b>	1 ml (100 µg/ml)
<b>Concentration</b>	100 µg/ml

#### Product description

<b>Host</b>	Mouse
<b>Antibody Type</b>	Monoclonal
<b>Isotype</b>	IgG1 kappa
<b>Clone</b>	MFG-06
<b>Immunogen</b>	Milk fat globule membrane preparation derived from human breast cancer cell line PMC42
<b>Formulation</b>	PBS with 0.02% sodium azide
<b>UniprotID</b>	Q08431 (Human), P70490 (Rat)
<b>Synonym</b>	Lactadherin, Breast epithelial antigen BA46, HMFG, MFGM, Milk fat globule-EGF factor 8, MFG-E8, SED1 [Cleaved into: Lactadherin short form; Medin], MFGE8
<b>Conjugate</b>	Unconjugated
<b>Purification</b>	Affinity chromatography
<b>Storage</b>	2-8°C
<b>Intended use</b>	Research use only
<b>Application</b>	FACS, ICC/IF, IHC, WB
<b>Reactivity</b>	Human, Rat

#### Applications

<b>Flow Cytometry (FACS)</b>	0.5-1.0 µg/million cells in 0.1 ml
<b>Immunocytochemistry (ICC)</b>	1:100-1:200 (0.5-1.0 µg/ml)
<b>Immunohistochemistry (IHC) - frozen</b>	1:50-1:100 (1-2 µg/ml)
<b>Immunohistochemistry (IHC) - paraffin</b>	1:50-1:100 (1-2 µg/ml; microwave treatment in 10 mM citrate buffer pH 6.0 recommended)
<b>Western Blot (WB)</b>	1:50-1:100 (1-2 µg/ml)

#### Background

MFG-06 reacts with a glycoprotein of 40-45 kDa, known as Milk fat globule-EGF factor 8 protein (MFG-E8), lactadherin, p47 or milk fat globule 1 antigen. It is present on normal epithelial cells in various organs and considered a differentiation marker in carcinomas. It contains one EGF-like domain and 2 F5/8 type C domains. Functioning as a specific ligand for Integrin beta 5 and Integrin beta 3, MFG-E8 is thought to be involved in gamete interactions and cell attachment, possibly playing a role in fertilization and apoptosis. Additionally, MFG-E8 binds to rotavirus and inhibits its replication, thereby protecting the cell from viral infection. Overexpression of MFG-E8 is associated with breast cancer, suggesting that MFG-E8 may be related to tumorigenesis or progression. Among testicular carcinomas, seminomas are negative.

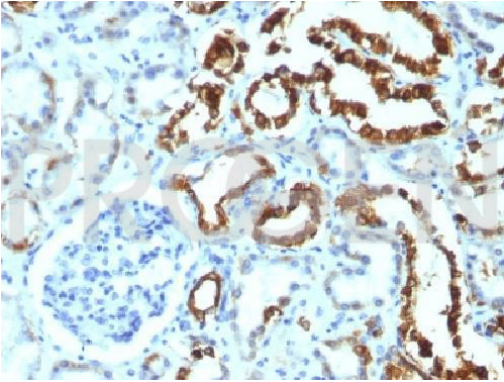
PROGEN Biotechnik GmbH | Maaßstraße 30 | D-69123 Heidelberg

Tel.: +49 (0) 6221 8278-0 | Fax: +49 (0) 6221 8278-24 | Email: [info@progen.com](mailto:info@progen.com) | Web: [www.progen.com](http://www.progen.com)

2024 April 25 / Version: 691710/DS-230420ibg | Page 1

Positive control: normal breast or breast carcinoma.

## Product images



Human kidney