

Product datasheet

anti-CD29 mouse monoclonal, Moon-4, purified

Short overview

Cat. No.	691574
Quantity	1 ml (100 µg/ml)
Concentration	100 µg/ml

Product description

Host	Mouse
Antibody Type	Monoclonal
Isotype	IgG1 kappa
Clone	Moon-4
Immunogen	Stimulated human leucocytes
Formulation	PBS with 0.02% sodium azide
UniprotID	P05556 (Human)
Synonym	Integrin beta-1, Fibronectin receptor subunit beta, Glycoprotein IIa, GPIIa, VLA-4 subunit beta, CD antigen CD29, ITGB1, FNRB, MDF2, MSK12
Conjugate	Unconjugated
Purification	Affinity chromatography
Storage	2-8°C
Intended use	Research use only
Application	FACS, ICC/IF, IHC
Reactivity	Human

Applications

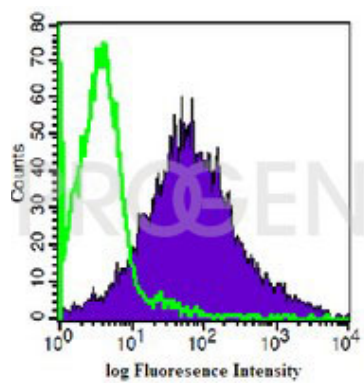
Flow Cytometry (FACS)	0.5-1.0 µg/million cells in 0.1 ml
Immunocytochemistry (ICC)	1:100-1:200 (0.5-1.0 µg/ml)
Immunohistochemistry (IHC) - frozen	1:50-1:100 (1-2 µg/ml)

Background

Moon-4 is specific for CD29, an adhesion receptor and costimulatory molecule. This antigen was initially characterized as gpIIa on platelets and as the common beta 1 subunit of the very late antigen (VLA) protein family. CD29 forms a non-covalent heterodimeric complex with integrin alpha subunits. It also mediates adhesion to invasin and thrombospondin.

Positive control: human lymphocytes, lymph node or tonsil.

Product images



FACS with human peripheral blood lymphocytes (PBL)