

Product datasheet

anti-Keratin K77 guinea pig polyclonal, serum

Short overview

Cat. No.	GP-K77
Quantity	100 µl

Product description

Host	Guinea pig
Antibody Type	Polyclonal
Immunogen	Synthetic peptide from human K77(K1b): RVY STS SSA GSG GGS-C
Formulation	Contains 0.09% sodium azide and 0.5% BSA
UniprotID	Q7Z794 (Human)
Synonym	Keratin, type II cytoskeletal 1b, Cytokeratin-1B, CK-1B, Keratin-77, K77, Type-II keratin Kb39, KRT77, KRT1B
Note	Centrifuge prior to opening
Conjugate	Unconjugated
Purification	Stabilized antiserum
Storage	Short term at 2-8°C; long term storage in aliquots at -20°C; avoid freeze/thaw cycles
Intended use	Research use only
Application	IHC, WB
Reactivity	Human
No reactivity	Mouse

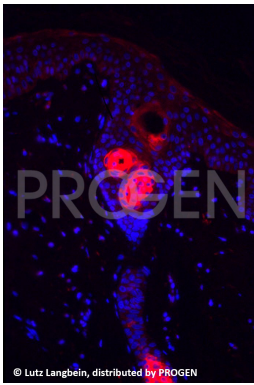
Applications

Immunohistochemistry (IHC) - frozen	1:1,000
Immunohistochemistry (IHC) - paraffin	1:1,000 (microwave treatment recommended)
Western Blot (WB)	Assay dependent

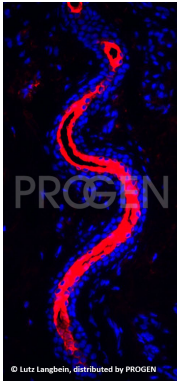
Background

K77 (formerly K1b) is closely related to K1, but, in adult humans, it is exclusively expressed in luminal duct cells of eccrine sweat glands. The secretory gland is negative as the peripheral cells of the duct. Furthermore, K77 is expressed in suprabasal fetal epidermis, where it appears slightly subsequent to K1. This expression order is also found in conventional and organotypic cultures of human keratinocytes. Ultrastructural investigations show that in contrast to murine K77 intermediate filaments, those of the human ortholog are not attached to desmosomes. After birth, K77 disappears without consequences from human epidermis.

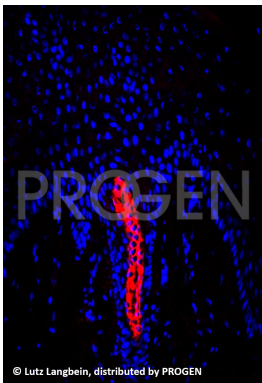
Product images



Human skin (courtesy of L. Langbein)



Adult human sole (courtesy of L. Langbein)



Adult human sole (courtesy of L. Langbein)

References

Publication	Species	Application
Langbein, L. et al. New facets of keratin K77: Interspecies variations of expression and different intracellular location in embryonic and adult skin of humans and mice. Cell Tissue Res. 354, 793-812 (2013).	human,mouse	WB,IHC (frozen),IEM