

# Product datasheet

## anti-Bombesin (frog) rabbit polyclonal, serum

### Short overview

<b>Cat. No.</b>	11182
<b>Quantity</b>	250 µl

### Product description

<b>Host</b>	Rabbit
<b>Antibody Type</b>	Polyclonal
<b>Immunogen</b>	Synthetic frog bombesin conjugated to bovine thyroglobulin
<b>Formulation</b>	Contains 0.09% sodium azide
<b>Note</b>	Centrifuge prior to opening
<b>Conjugate</b>	Unconjugated
<b>Purification</b>	Stabilized antiserum
<b>Storage</b>	Short term at 2-8°C; long term storage in aliquots at -20°C; avoid freeze/thaw cycles
<b>Intended use</b>	Research use only
<b>Application</b>	IHC
<b>Reactivity</b>	Frog, Human, Mouse, Rat

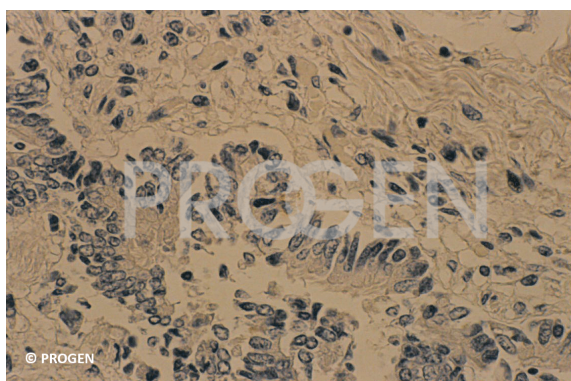
### Applications

<b>Immunohistochemistry (IHC) - frozen</b>	1:50
<b>Immunohistochemistry (IHC) - paraffin</b>	1:50 (microwave treatment recommended)

### Background

This polyclonal antibody can be used for the study of endocrine differentiation in tumors of the respiratory tract. Positive control: Gut (peripheral nerves), fetal lung

### Product images



anti-Bombesin (frog) rabbit polyclonal, serum