

## Product datasheet

# anti-Legionella pneumophila Type 1 mouse monoclonal, EBS-I-104, purified

### Short overview

<b>Cat. No.</b>	691646
<b>Quantity</b>	1 ml (100 µg/ml)
<b>Concentration</b>	100 µg/ml

### Product description

<b>Host</b>	Mouse
<b>Antibody Type</b>	Monoclonal
<b>Isotype</b>	IgG3 kappa
<b>Clone</b>	EBS-I-104
<b>Immunogen</b>	Sonicated Legionella pneumophila type 1
<b>Formulation</b>	PBS with 0.02% sodium azide
<b>Conjugate</b>	Unconjugated
<b>Purification</b>	Affinity chromatography
<b>Storage</b>	2-8°C
<b>Intended use</b>	Research use only
<b>Application</b>	ELISA, ICC/IF, IHC
<b>Reactivity</b>	L. pneumophila serogroup 1

### Applications

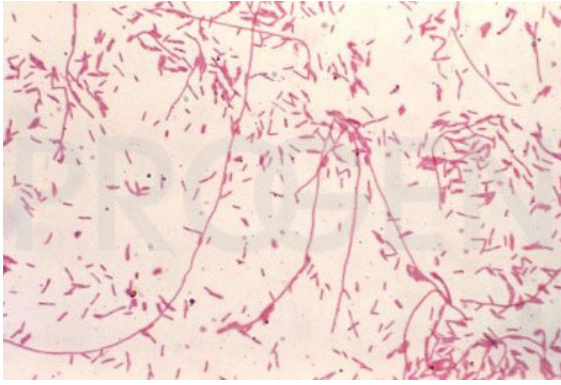
<b>ELISA</b>	Assay dependent
<b>Immunocytochemistry (ICC)</b>	1:100-1:200 (0.5-1.0 µg/ml)
<b>Immunohistochemistry (IHC) - frozen</b>	1:50-1:100 (1-2 µg/ml)

### Background

LP46 reacts with serogroup 1 (SG1) from the Pontiac 1, Benidorm and Knoxville strains. It reacts with SG1 from the Philadelphia strain. No reactivity with other serogroups or with *L. erythra*, *L. dumoffii*, or *Pseudomonas aeruginosa*. *Legionella pneumophila* is a flagellated Gram-negative bacterium found primarily in warm water environments. *Legionella pneumophila* causes a type of pneumonia called Legionnaire disease and a milder condition called Pontiac fever. Infection is acquired through inhalation of the microorganism in water mists (e.g. from air conditioning, cooling towers, whirlpool spas and showers mists). A number of risk factors for acquiring Legionnaire disease have been identified, including age, smoking, chronic lung disease, cancer, and immunosuppression.

Positive control: *L. pneumophila* type 1 extract or infected cells or tissue.

### Product images



*Legionella pneumophila*