

Product datasheet

anti-GAPDH mouse monoclonal, clone 6C5, liquid, purified, sample

Short overview

Cat. No.	690975S
Quantity	200 µl (100 µg/ml)
Concentration	100 µg/ml (20 µg)

Product description

Host	Mouse
Antibody Type	Monoclonal
Isotype	IgG1
Clone	6G5
Immunogen	GAPDH purified from rabbit muscle
Formulation	PBS, pH 7.4 with 0.09% sodium azide and 0.5% BSA
UniprotID	P62739 (Bovine), P08023 (Chicken), P62736 (Human), P62737 (Mouse), P62738 (Rat)
Synonym	Actin, aortic smooth muscle, Alpha-actin-2, Cell growth-inhibiting gene 46 protein [Cleaved into: Actin, aortic smooth muscle, intermediate form], ACTA2, ACTSA, ACTVS, GIG46
Conjugate	Unconjugated
Purification	Affinity chromatography
Storage	Short term at 2-8°C; long term storage in aliquots at -20°C; avoid freeze/thaw cycles
Intended use	Research use only
Application	WB
Reactivity	Human

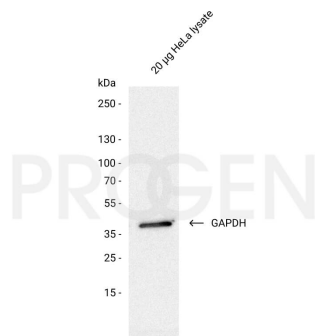
Applications

Western Blot (WB)	1:5,000 (20 ng/ml)
--------------------------	--------------------

Background

GAPDH (Glyceraldehyde 3-phosphate dehydrogenase) is a 37 kDa enzyme that catalyzes the conversion from glyceraldehyde 3-phosphate (G3P) to 1,3-bisphosphoglycerate. Thereby, NADH is built. GAPDH is commonly used as a loading control for Western blotting or as a housekeeping gene standard in qPCR.

Product images



Western blot analysis of HeLa lysate with anti-GAPDH antibody. Western blot analysis was performed on 20 µg HeLa lysate. Cells were lysed with RIPA buffer. The PVDF membrane was blocked with 5% dry milk in PBST (PBS + 0.1% Tween 20) for 1 h at RT. The primary antibody anti-GAPDH antibody mouse monoclonal, clone 6C5 (Cat. No. 690975) was diluted in blocking buffer (antibody concentration 0.02 µg/ml) and incubated for 1 h at RT. The secondary antibody anti-mouse IgG goat polyclonal, HRP conjugate was also diluted in blocking buffer (antibody concentration 0.4 µg/ml) and incubated for 1 h at RT. The bands were visualized by chemiluminescent detection using Pierce™ ECL Western Blotting Substrate.