

## Product datasheet

### anti-CRASH mouse monoclonal, 7B6, purified

#### Short overview

<b>Cat. No.</b>	691516
<b>Quantity</b>	1 ml (100 µg/ml)
<b>Concentration</b>	100 µg/ml

#### Product description

<b>Host</b>	Mouse
<b>Antibody Type</b>	Monoclonal
<b>Isotype</b>	IgG1 kappa
<b>Clone</b>	7B6
<b>Immunogen</b>	With CRASH recombinant protein and synthetic peptide
<b>Formulation</b>	PBS with 0.02% sodium azide
<b>UniprotID</b>	Q7L266 (Human)
<b>Synonym</b>	Isoaspartyl peptidase/L-asparaginase, EC 3.4.19.5, EC 3.5.1.1, Asparaginase-like protein 1, Beta-aspartyl-peptidase, Isoaspartyl dipeptidase, L-asparagine amidohydrolase [Cleaved into: Isoaspartyl peptidase/L-asparaginase alpha chain; Isoaspartyl peptidase/L-asparaginase beta chain], ASRGL1, ALP, CRASH
<b>Conjugate</b>	Unconjugated
<b>Purification</b>	Affinity chromatography
<b>Storage</b>	2-8°C
<b>Intended use</b>	Research use only
<b>Application</b>	ELISA, IHC, WB
<b>Reactivity</b>	Human

#### Applications

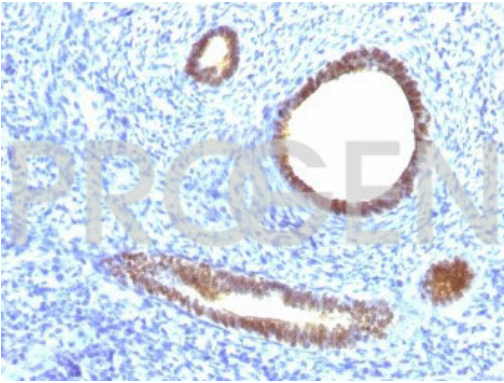
<b>ELISA</b>	Assay dependent
<b>Immunohistochemistry (IHC) - frozen</b>	1:50-1:100 (1-2 µg/ml)
<b>Immunohistochemistry (IHC) - paraffin</b>	1:50-1:100 (1-2 µg/ml; microwave treatment in 10 mM citrate buffer pH 6.0 recommended)
<b>Western Blot (WB)</b>	1:50-1:100 (1-2 µg/ml)

#### Background

7B6 reacts with CRASH, a 308 AA glycoprotein sharing 32% homology with human asparaginase and identical to Asparaginase-Like Protein (ALP) found in rat sperm. CRASH is found in a variety of tumors, but only occasionally in normal tissues. Especially ovarian cancers are highly positive. CRASH is further found in brain tumors, some colonic cancers, some lung cancers, some prostate cancers, uterine cancers, some breast cancers and some thyroid cancers. It was not found in serum. In Western blot three bands are demonstrated of 45 kDa, 28 kDa and 15 kDa.

Positive control: ovarian cancer, KM22 breast cancer cells.

## Product images



Human uterus