

Product datasheet

anti-Alpha fetoprotein (AFP) mouse monoclonal, C3, purified

Short overview

Cat. No.	691543
Quantity	1 ml (100 µg/ml)
Concentration	100 µg/ml

Product description

Host	Mouse
Antibody Type	Monoclonal
Isotype	IgG2a kappa
Clone	C3
Immunogen	Alpha fetoprotein isolated from serum of hepatoma patients
Formulation	PBS with 0.02% sodium azide
UniprotID	Q8MJU5 (Dog, Canis familiaris), P02771 (Human), Q8MJ76 (Pig)
Synonym	Alpha-fetoprotein, Alpha-1-fetoprotein, Alpha-fetoglobulin, AFP, HPAFP
Conjugate	Unconjugated
Purification	Affinity chromatography
Storage	2-8°C
Intended use	Research use only
Application	ELISA, FACS, ICC/IF, IHC
Reactivity	Dog, Human, Monkey, Pig
No reactivity	Bovine, Mouse, Rat

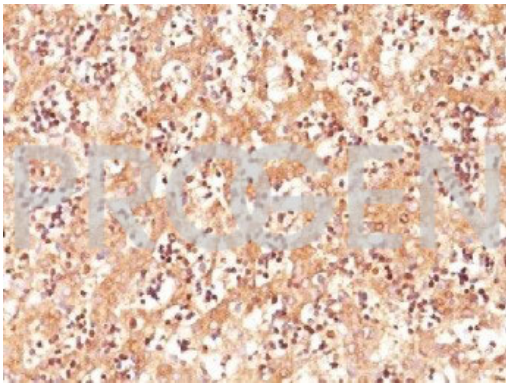
Applications

ELISA	Assay dependent
Flow Cytometry (FACS)	0.5-1.0 µg/million cells in 0.1 ml
Immunocytochemistry (ICC)	1:100-1:200 (0.5-1.0 µg/ml)
Immunohistochemistry (IHC) - frozen	1:50-1:100 (1-2 µg/ml)
Immunohistochemistry (IHC) - paraffin	1:50-1:100 (1-2 µg/ml; microwave treatment in 10 mM citrate buffer pH 6.0 recommended)

Background

C3 has been characterized in the ISOBM TD-2 workshop and assigned by K. Nunstad to a group of antibodies with low affinity to human alpha fetoprotein. Human alpha fetoprotein is an oncofetal protein of 70 kDa and expressed in fetal liver, but normally absent in healthy adult tissues. It is expressed in all yolk sac tumors, in some other germ cell tumors and in hepatocellular carcinomas.

Positive control: Hep-G2 cells, fetal liver or hepatocellular carcinoma.



Fetal liver