

## Product datasheet

### anti-HPV-16 E6 mouse monoclonal, HPV-13E2, purified

#### Short overview

|                      |                  |
|----------------------|------------------|
| <b>Cat. No.</b>      | 691696           |
| <b>Quantity</b>      | 1 ml (100 µg/ml) |
| <b>Concentration</b> | 100 µg/ml        |

#### Product description

|                      |                             |
|----------------------|-----------------------------|
| <b>Host</b>          | Mouse                       |
| <b>Antibody Type</b> | Monoclonal                  |
| <b>Isotype</b>       | IgG1 kappa                  |
| <b>Clone</b>         | HPV-13E2                    |
| <b>Immunogen</b>     | HPV-16 E6 synthetic peptide |
| <b>Formulation</b>   | PBS with 0.02% sodium azide |
| <b>Conjugate</b>     | Unconjugated                |
| <b>Purification</b>  | Affinity chromatography     |
| <b>Storage</b>       | 2-8°C                       |
| <b>Intended use</b>  | Research use only           |
| <b>Application</b>   | ELISA, IHC                  |
| <b>Reactivity</b>    | Human                       |

#### Applications

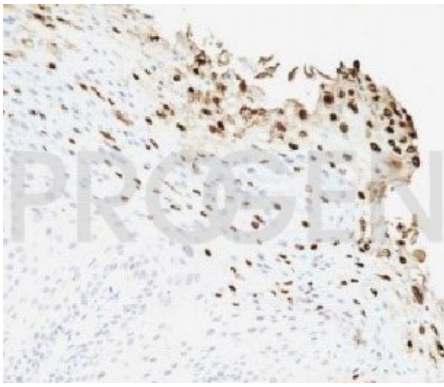
|  |                                 |
|--|---------------------------------|
| <b>ELISA</b>                               | 1:1-1:100,000 (0.001-100 µg/ml) |
| <b>Immunohistochemistry (IHC) - frozen</b> | 1:50-1:100 (1-2 µg/ml)          |

#### Background

Monoclonal antibody HPV-13E2 reacts with HPV-16 E6 peptide (MHQKRTAMFQDPPQERPRKLPQLC). Infection with specific types of HPV has been associated with an increased risk of developing cervical neoplasia. HPV types 6 and 11 have been associated with relatively benign diseases such as genital warts but types 16 and 18 are strongly associated with cervical, vaginal, and vulvar malignancies.

Positive control: HPV-16 E6 synthetic peptide or recombinant protein.

#### Product images



Human cervix