

Product datasheet

anti-PLAP (Placental alkaline phosphatase) mouse monoclonal, F5C2 (C2), purified

Short overview

Cat. No.	691686
Quantity	1 ml (100 µg/ml)
Concentration	100 µg/ml

Product description

Host	Mouse
Antibody Type	Monoclonal
Isotype	IgG1
Clone	F5C2 (C2)
Immunogen	PLAP, purified from FS phenotype human placenta
Formulation	PBS with 0.02% sodium azide
UniprotID	P05187 (Human)
Synonym	Alkaline phosphatase, placental type, EC 3.1.3.1, Alkaline phosphatase Regan isozyme, Placental alkaline phosphatase 1, PLAP-1, ALPP, PLAP
Conjugate	Unconjugated
Purification	Affinity chromatography
Storage	2-8°C
Intended use	Research use only
Application	ELISA, FACS, IHC, IP, WB
Reactivity	Human

Applications

ELISA	Assay dependent
Flow Cytometry (FACS)	0.5-1.0 µg/million cells in 0.1 ml
Immunohistochemistry (IHC) - frozen	1:25-1:50 (2-4 µg/ml)
Immunohistochemistry (IHC) - paraffin	1:25-1:50 (2-4 µg/ml; microwave treatment in 10 mM citrate buffer pH 6.0 recommended)
Immunoprecipitation (IP)	Assay dependent
Western Blot (WB)	1:50-1:100 (1-2 µg/ml)

Background

PLAP is a tissue specific, trophoblast-derived, 58 kDa, glycosyl-phosphatidylinositol (GPI)-anchored, dimeric, Zn²⁺ metallated glycoprotein, only found in humans, orangutans and chimpanzees, that catalyzes the hydrolysis of phosphomonoesters into an inorganic phosphate and an alcohol. It is present in the placenta and serum of pregnant women and in high frequency in gynecological and testicular cancers and in lower frequency in other tumors. The three tissue-specific APs in humans, PLAP, germ cell AP (GCAP) and intestinal AP, are 90-98% homologous. Non tissue

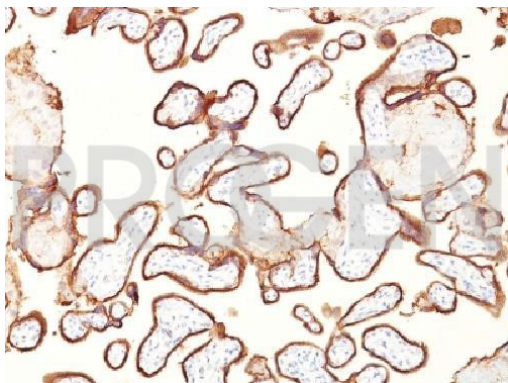
PROGEN Biotechnik GmbH | Maaßstraße 30 | D-69123 Heidelberg

Tel.: +49 (0) 6221 8278-0 | Fax: +49 (0) 6221 8278-24 | Email: info@progen.com | Web: www.progen.com

specific AP is found in kidney, liver and bone. F5C2 binds equally well to all common allelic variants (S,F, FS and I) of PLAP and to some variants of AP from normal human testis, while antibody H7E8 reacts with all variants of AP in normal human testis.

Positive control: Human placenta.

Product images



Human placenta