

# Product datasheet

## anti-CD37 mouse monoclonal, IPO-24, purified

### Short overview

<b>Cat. No.</b>	691578
<b>Quantity</b>	1 ml (100 µg/ml)
<b>Concentration</b>	100 µg/ml

### Product description

<b>Host</b>	Mouse
<b>Antibody Type</b>	Monoclonal
<b>Isotype</b>	IgG2b kappa
<b>Clone</b>	IPO-24
<b>Immunogen</b>	Spleen cells of a patient with hairy cell leukemia
<b>Formulation</b>	PBS with 0.02% sodium azide
<b>UniprotID</b>	P11049 (Human)
<b>Synonym</b>	Leukocyte antigen CD37, Tetraspanin-26, Tspan-26, CD antigen CD37, CD37, TSPAN26
<b>Conjugate</b>	Unconjugated
<b>Purification</b>	Affinity chromatography
<b>Storage</b>	2-8°C
<b>Intended use</b>	Research use only
<b>Application</b>	FACS, ICC/IF, IHC
<b>Reactivity</b>	Human

### Applications

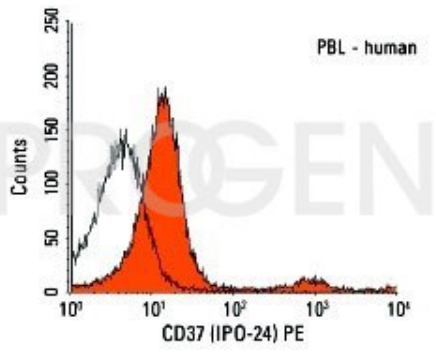
<b>Flow Cytometry (FACS)</b>	0.5-1.0 µg/million cells in 0.1 ml
<b>Immunocytochemistry (ICC)</b>	1:100-1:200 (0.5-1.0 µg/ml)
<b>Immunohistochemistry (IHC) - frozen</b>	1:50-1:100 (1-2 µg/ml)

### Background

IPO-24 reacts with CD37, a B lineage restricted antigen, strongly expressed throughout B-cell ontogeny from pre B-cell until plasmablasts. Plasma cells are negative. IPO-24 reacts with human B-cell lines Daudi, Raji, Namalva, Ramos and CABIL, whereas T-cell lines CEM, Molt-4, Jurkat, MT-4, H9 and non-lymphoid cell lines MeWo and A-431 are negative. IPO-24 stains B-cell follicles and the most strongly labelled elements are mantle zone lymphoid cells. Neutrophils, macrophages, thymocytes and dendritic reticulum cells are negative.

Positive control: Daudi, Raji, Namalva and CABIL cells, human tonsil or lymph node.

### Product images



FACS with human peripheral blood lymphocytes (PBL)