

## Product datasheet

### anti-DOG1 mouse monoclonal, IHC562, purified

#### Short overview

<b>Cat. No.</b>	691733
<b>Quantity</b>	1 ml

#### Product description

<b>Host</b>	Mouse
<b>Antibody Type</b>	Monoclonal
<b>Isotype</b>	IgG1
<b>Clone</b>	IHC562
<b>Immunogen</b>	DOG1
<b>Formulation</b>	Tris pH 7.3-7.7 with 1% BSA and 0.09% sodium azide
<b>UniprotID</b>	Q5XXA6 (Human)
<b>Synonym</b>	Anoctamin-1, Discovered on gastrointestinal stromal tumors protein 1, Oral cancer overexpressed protein 2, Transmembrane protein 16A, Tumor-amplified and overexpressed sequence 2, ANO1, DOG1, ORAOV2, TAOS2, TMEM16A
<b>Conjugate</b>	Unconjugated
<b>Purification</b>	Affinity chromatography
<b>Storage</b>	2-8°C
<b>Intended use</b>	Research use only
<b>Application</b>	IHC
<b>Reactivity</b>	Human

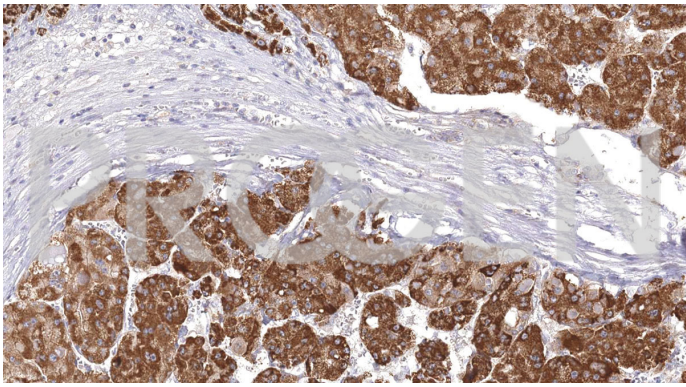
#### Applications

<b>Immunohistochemistry (IHC) - paraffin</b>	1:50-1:200 (microwave treatment recommended)
--	--

#### Background

DOG1, also known as Discovered on GIST-1, is a marker that highly specific for gastrointestinal stromal tumor (GIST). Anti-DOG1 is extremely sensitive for the detection of GIST and its diagnosis. Although some GIST stain weakly for c-kit, DOG1 is expressed

#### Product images



Liver cancer