

Product datasheet

anti-CD25/IL2RA mouse monoclonal, 143-13, purified

Short overview

Cat. No.	691570
Quantity	1 ml (100 µg/ml)
Concentration	100 µg/ml

Product description

Host	Mouse
Antibody Type	Monoclonal
Isotype	IgG1 kappa
Clone	143-13
Immunogen	Stimulated human leucocytes
Formulation	PBS with 0.02% sodium azide
UniprotID	P01589 (Human)
Synonym	Interleukin-2 receptor subunit alpha, IL-2 receptor subunit alpha, IL-2-RA, IL-2R subunit alpha, IL2-RA, TAC antigen, p55, CD antigen CD25, IL2RA
Conjugate	Unconjugated
Purification	Affinity chromatography
Storage	2-8°C
Intended use	Research use only
Application	ELISA, FACS, ICC/IF, IHC, WB
Reactivity	Human

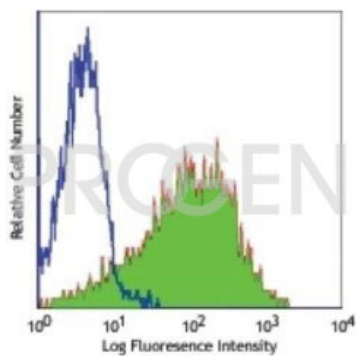
Applications

ELISA	Assay dependent
Flow Cytometry (FACS)	1-2 µg/million cells
Immunocytochemistry (ICC)	1:50-1:100 (1-2 µg/ml)
Immunohistochemistry (IHC) - frozen	1:50-1:100 (1-2 µg/ml)
Western Blot (WB)	1:50-1:100 (1-2 µg/ml)

Background

143-13 reacts with CD25 (55 kDa) which binds to IL-2 with low affinity, unless it associates as alpha chain with CD122 and the common gamma chain (CD132) to form the high-affinity IL-2 receptor complex. The CD25 molecule reveals three epitope regions: A, B, and C. 143-13 recognizes epitope region B, which is located at residue 3-104 of CD25 and can effectively block IL-2 binding to CD25. 143-13 was assigned to CD25 at the Fourth International Workshop (code A27).

Positive control: PHA-stimulated human lymphocytes, human lymph nodes and tonsils.



FACS with activated human peripheral blood lymphocytes (PBL)